

Play your part to conserve the resource

Fishing is one of New Zealand's most popular recreational activities. Every year a large number of finfish, rock lobster and shellfish are taken by recreational fishers. This can seriously affect local fisheries. This means it is important for all fishers to act responsibly and help conserve the resource.

Know the limits

Commercial fishers must have a current fishing permit and are subject to strict quotas or limits on how much they can catch, along with many other controls. The restrictions on recreational fishers are relatively simple. The three main things to remember are:

- > **Don't take more than the daily limit.**
- > **Don't take undersized fish.**
- > **Don't sell or trade your catch.**

Only those people physically involved in taking finfish, rock lobster, or shellfish are entitled to claim a catch within the daily limit. You should also be aware of the restrictions on the fishing gear and methods you can use.

Alive and unharmed

Unlawfully taken fish (such as fish taken in excess of your daily limit, undersized fish, or fish taken with undersized mesh) must be immediately returned to the water. Fish taken alive should be handled with wet cotton or rubber gloves or at least wet hands and returned to the water very gently, allowing the fish to slide into the water from as close to the surface as possible.

It is important to return fish, especially shellfish and rock lobster, as near as possible to the place where they were found. Dead fish that are taken unlawfully must also be returned to the water. If you encounter large numbers of undersized fish then change locations or use a larger hook size. Landing nets can be used to secure fish lawfully taken by any method.

A guide

These notes provide a guide to the regulations. For full details on amateur fishing restrictions, contact your nearest Ministry of Fisheries office. A complete copy of the law (including the Fisheries Act 1996 and associated regulations) are available from Bennetts Government Bookshops.

Finfish

Bag limits and size restrictions

In the North Region there is a **combined maximum daily bag limit** of 20 of any combination of the following finfish:

Finfish Species	Minimum fish length (cm)	Minimum set net mesh size (mm)	Minimum dragnet mesh size (mm)
Blue Cod	30	100	100
Blue Moki	40	114	115
Bluenose	-	160	100
Butterfish	35	108	108
Elephant fish	-	150	150
Flatfish (except Sand flounder)	25	114	100
John Dory	-	100	100
Kahawai	-	90	85
Parore	-	114	100
Porae	-	100	100
Red cod	25	100	100
Red gurnard	25	100	100
Red moki	40	115	115

Finfish Species	Minimum fish length (cm)	Minimum set net mesh size (mm)	Minimum dragnet mesh size (mm)
Red snapper	-	114	100
Rig	-	125	150
Sand flounder	23	114	100
School shark	-	125	100
Tarakihi	25	100	100
Trevally	25	125	100
Trumpeter	35	100	100

In addition to the combined maximum daily bag limit, you can also take a maximum of:

Finfish Species	Minimum fish length (cm)	Maximum daily limit per person	Minimum set net mesh size (mm)	Minimum dragnet mesh size (mm)
Eels	-	6	12	12
Grey Mullet	-	30	90	85
Snapper	27	10	125	100
Snapper SNA1 (ref#)	27	9	125	100

In addition to the previously mentioned limits you may also take the following:

A combined daily limit of 5 (with no more than 3 kingfish) of the following finfish:

Finfish Species	Minimum fish length (cm)	Minimum set net mesh size (mm)	Minimum dragnet mesh size (mm)
Groper/Hapuku/Bass	-	160	100
Kingfish	75	100	100

No daily bag limit applies to the following finfish:

Garfish (piper)	-	25	25
Pilchard	-	25	25
Yellow eyed mullet	-	25	25
All others	-	100	100

#SNA1 refers to the area from North Cape to Cape Runaway, out to a distance of 200 nautical miles offshore (see diagram).



Length measurement

Finfish length is measured from the tip of the nose to the Middle Ray or "V" in the tail (as shown in diagram).



Method and species restrictions

Line fishing

- > No person may use or be in possession of more than one line (other than handlines or rod and reel lines).
- > All surface floats attached to any line must be marked permanently and legibly with the fisher's initials and surname. A phone number is also useful.
- > No person may use or possess a line with more than 25 hooks.
- > Where more than one person is using a line from a vessel (other than rod and reel lines), no more than two lines (other than rod and reel lines) may be used, set from or possessed on board that vessel.

General netting restrictions

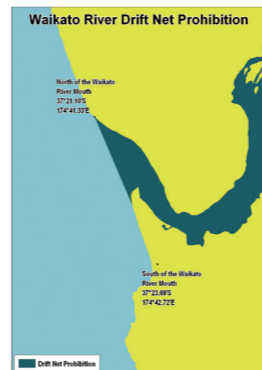
- > No person may set or possess more than one drag net, set net, fyke net, or any other type of net at any one time.
- > Nets must be hauled by hand.
- > Any net or nets used either individually or jointly must not extend across more than one-quarter of the width of any river, stream, channel, bay or sound.
- > No person may set or use a baited net (except fyke nets).
- > Nets must not be staked (except fyke nets).
- > No net may be used in a way that causes fish to be stranded by the falling tide (stalling).
- > Each end of a set net must have a surface float permanently and legibly marked with the fisher's initials and surname. A phone number is also useful. Only one float is required for fyke nets.

Drag net restrictions

- > Drag nets must not exceed 40 metres in length.
- > Total warp length must not exceed 200 metres.

Drift net restrictions

Drift netting is prohibited in any part of the Waikato River. A drift net is a net that acts by enmeshing, entrapping, or entangling any fish or marine life, and acts by drifting in the water, or on the surface of the water, and is not attached to a vessel or any point of land or the sea bed.



Set net restrictions

- > Only one set net is allowed to be used from, or be on board any vessel. (An additional net is allowed for baitfishing if it is less than 10 metres long and has a mesh size of 50 mm or less).
- > Must not exceed 60 metres in length.
- > Must not be set within 60 metres of another net.
- > Stalling of set nets is prohibited.

Minimum mesh sizes

There are restrictions on net mesh sizes for taking particular species as detailed in the "FINFISH - Bag limits and size restrictions" section of this pamphlet. In some cases the minimum mesh sizes for set nets are different from the minimum sizes for other nets such as drag nets.

Protection of spotted black groper

Spotted black groper: no person may take or possess spotted black groper.

Shellfish

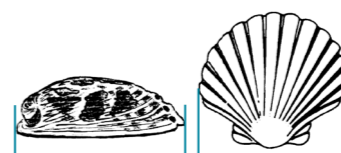
Sorting and measuring catch

The obligation to sort and count your catch arises when you legally "take" the shellfish. Exactly when this occurs has been the subject of discussion in the courts. A recent court case concluded that you should count and measure shellfish at the first reasonable opportunity and in that set of circumstances the first reasonable opportunity was on the seafloor as the shellfish were placed in the dive bag*

* Freedivers do not have as much time to measure on the seafloor so it is reasonable for them to do this at the surface.

How to measure shellfish

Paua: measure the greatest length of the shell in a straight line, (do not measure over the curve of the shell).



Scallop: measure the greatest diameter of the shell.

Dredge Oysters: must not pass through a rigid circular metal ring with an inside diameter of 58mm.

Underwater breathing apparatus (UBA)

(Does not include snorkels)

- > No person may take paua using UBA.
- > No person may be in possession of paua while in possession of UBA. This includes possession in or on any vessel or vehicle.

Open seasons

Oysters: There is no season restricting the taking of oysters. They can be taken all year round. However, oysters may not be taken from a small number of designated Māori reserves in the Northland and Waikato Region. Contact the Ministry of Fisheries for the exact locations of these reserves.

Scallops: the open season is 1 September to 31 March inclusive. Specific area closures may apply, please contact your local MFish office for details.

Protection of coral

Black Coral: no person may take or possess black coral.

Paua accumulation limits

When daily limits are accumulated the maximum number or amount of paua that one person can have in their possession at any one time is:

> **20 paua or**

> shucked weight (shell removed) of **2.5kgs** of paua

This possession limit applies everywhere, including in the home.

Shellfish Species	Daily limit per person	Auckland Coromandel area daily limit per person	Minimum size (mm)
Cockle	150	50	none
Kina (sea eggs)	50	50	none
Green-lipped mussels	50	25	none
Oysters - Dredge**	50	50	58
- Rock & Pacific†	250	100	none
Paua - Ordinary*	10	10	125
- Yellow Foot*	10	10	80
Pipi	150	50	none
Scallops +*	20	20	100
Toheroa#	Prohibited	Prohibited	Prohibited
Tuatua	150	50	none
All others • (combined)	50	50	none

* Dredge oyster, paua and scallop must be landed in the shell and cannot be shucked or shelled seaward of the mean high water mark. This does not include dredge oysters and scallops shucked onboard for consumption while at sea within daily bag limits.

† Rock and Pacific oysters must not be opened while they adhere to the object on which they grow.

+ Limited provision allows a diver on a vessel to gather extra bag limits of oysters and scallops for up to 2 other people acting in a dive safety capacity from that vessel.

Toheroa must not be taken, possessed, or disturbed unless an open season is declared by the Chief Executive of the Ministry of Fisheries.

• This is a combined, mixed-species bag limit. It applies to all shellfish species not specifically named above and includes all crabs, limpets, starfish, periwinkles, whelks, barnacles and freshwater crayfish (koura).

Recreational shellfish daily bag limits in the Auckland Coromandel area apply in the highlighted area depicted. This area extends on the east coast from Cape Rodney around the Coromandel Peninsula to Homunga Point (northern end of Waihi beach) and on the west coast from Okiritoto River (Muriwai Beach) to the sand-spit at Port Waikato.



Pots Limits

- > All pots and surface float must be clearly and permanently marked with the fishers surname and initials.
- > Individuals may use, set, or possess up to three pots in any one day.
- > Two or more individuals fishing from a vessel may use, set, or possess up to six pots in any one day provided they have their name on the pots and that each person is using no more than three of the pots.
- > Mimiwhangata Peninsula – one pot per person per vessel.
- > Bobs, ring pots may be used to catch rock lobster but all other requirements such as marking and pot limits apply.
 - Species specific pots (cod pots, crab pots etc.) can be used. They are exempted from escape gap requirements but all other requirement such as marking and pot limits remain.

Rock Lobster

Daily limit

No person may take or possess more than 6 rock lobsters (both species combined) on any one day.

Possession

Rock lobster may not be possessed seaward of the high water mark in an unmeasurable state.

Protected rock lobster

The following types of rock lobster must be returned immediately to the water:

- > Undersized rock lobsters.
- > Any rock lobster carrying external eggs (these are carried between the pleopods on the underside of the tail).
- > Any rock lobster in the soft shell stage.
- > Any rock lobster that cannot be measured (e.g. because of damage to the tail preventing accurate measurement).

General restrictions

It is an offence to:

- > Remove external eggs or the egg-bearing appendages from any rock lobster.

- > Use a spear or any device which could puncture the shell when taking rock lobster, or possess any rock lobster which has been speared.

Lassoos

Only hand operated loops or lassoos may be used to take rock lobster. It is prohibited to use a spring loaded loop or lasso.

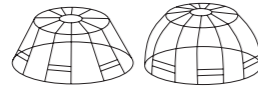
Use of pots

All rock lobster pots must have an escape gap as detailed in the "ESCAPE GAP RESTRICTIONS" section.

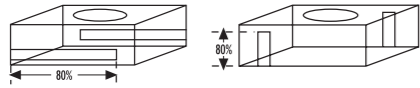
Escape gaps restrictions

- > No escape gap or aperture shall be incorporated in either the top or the bottom of any pot.
- > Escape gaps or apertures are designed to allow undersized rock lobster to escape.

> Round or beehive shaped pots must have at least 3 escape gaps/or apertures (other than the mouth). Each aperture must have an inside dimension of not less than 54 mm x 200 mm.



> Square or rectangular shaped pots must have at least 2 escape gaps/or apertures (other than the mouth) in opposite faces of the pot. Each aperture shall not be less than 80% of the height or length of the face of the pot in which the apertures are contained. Each aperture shall have an inside dimension of not less than 54 mm x 200 mm.



> Any rock lobster pot constructed entirely of unaltered spot welded mesh with inside dimensions of 54 mm x 140 mm does not have to have escape gaps/or apertures but the pots must be used without covers or liners or with covers or liners that leave unencumbered at least 80% of the surface area of each of 2 opposite sides.

Minimum sizes

No person may take or possess

- > Male red rock lobster with a tail width less than 54 mm.
- > Female red rock lobster with a tail width less than 60 mm.
- > Packhorse rock lobster (either sex) with a tail length less than 216 mm.

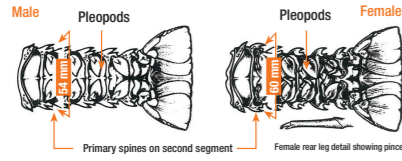
How to measure a red rock lobster

The tail width is measured in a straight line between the tips of the two large (primary) spines on the second segment of the tail, as shown in the diagram which follows:

The sex is easily determined:

> Females have small pincers on the rear pair of legs.

> Pleopods are in paired form on each side of the underside of female tails, and are in single form in male tails.



If you are unsure of the sex, use the 60 mm measurement and you will be safe.

How to measure a packhorse rock lobster

The tail length is measured along the underside in a straight line from the rear of the calcified bar on the first segment to the tip of the middle fan of the tail.



Closed and restricted areas

In each of the regional Fishery Management Areas, there are closed and restricted areas where no fishing is allowed. These areas may be closed by the Ministry of Fisheries as prohibited areas (e.g. area near the Auckland International Airport and Tawharanui Peninsula) or by the Department of Conservation as marine reserves (e.g. Long Bay – Okura Marine Reserve).

Within the North Region there are locations which are closed to shellfish gathering. The following notes identify some of the areas, but this should only be used as a guide as closures may change from time to time. If you are unsure of the location of closures or the species subject to closure, you should contact your nearest Ministry of Fisheries office.

Shellfish closures and restricted areas

Umupuia Beach - closed to taking of cockles for 2 years from 16 October 2010. Cockle Bay - closed for taking of all shellfish 1 October to 30 April each year (both days inclusive). Whangateau Harbour - closed to taking of cockles and pipis from 25 March 2010 until 26 March 2013.

The following areas within Auckland are closed to all shellfish gathering: Eastern Beach, Karekare Beach, and Cheltenham Beach.

Set nets

The following areas are closed to set netting: Three Kings Islands, Cape Reinga – Scott Point, Reef Point to Whangape Harbour, Bay of Islands (Cape Wīwīki, Whale Rock, The Twins - Cape Brett) northern side of the Hen and Chickens, Mokohinau Islands, Simpson Rock, Little Barrier, Great Barrier (Needles Point, eastern side of Arid Island, Cape Barrier), Channel Island, Cape Colville, most of the Mercury Islands, Pauanui, Tamaki River, Panmure Basin, Muriwai Beach, Karekare Beach, Pariokariwa Point to Maunganui Bluff, Manukau Heads and Cape Runaway.

Set nets and set lines

These methods are prohibited in the following places: all year round the Poor Knights Islands, Mimiwhangata, and Mayor Island; from 1 October to 30 April in the Eastern Bay of Islands (except for grey mullet and flatfish nets); from 1 December to 31 March for 6 nautical miles from Okatōa Rock (near Motu River mouth). Contact the Ministry of Fisheries for the exact locations.

Closed areas for set nets

Set netting is prohibited between Maunganui Bluff north of Kaipara Harbour and Pariokariwa Point north of New Plymouth - offshore to seven nautical miles.

Set netting is prohibited at the entrance of the Kaipara, Manukau and Raglan harbours as well as at the Waikato River entrance.

There are other set net prohibitions and restrictions in the Auckland and Kermadec Fishery Management Area and the Central Fishery Management Area that are to protect Maui's dolphins.

You must check for set net prohibitions and restrictions in the area where you plan to fish - before you go fishing.

Go to fish.govt.nz or call your nearest Ministry of Fisheries office.

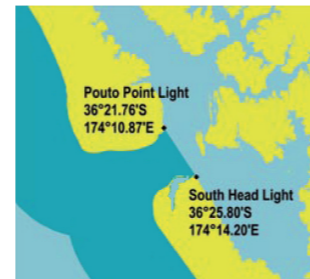
A set net includes a gill net or other sort of net that acts by enmeshing, entrapping, or entangling fish; but does not include a fyke net or hinaki.

Set Net Ban Area

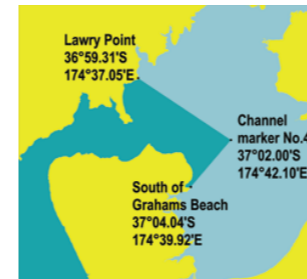


IMPORTANT

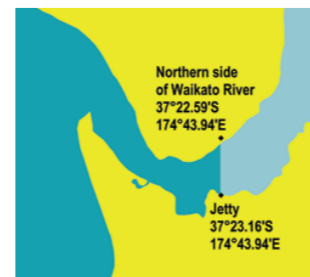
Unless specified, the prohibition does not apply to rivers and harbours - subject to any other fisheries restrictions, you can use set nets in these areas inside a straight line joining the natural entrance points of the waterway. The regulations define these points in some cases because they are not always clear.



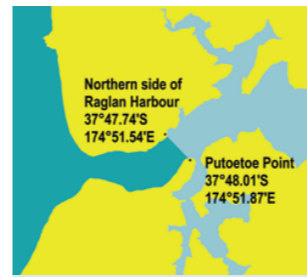
Set net prohibition in the Kaipara Harbour entrance



Set net prohibition in the Manukau Harbour entrance



Set net prohibition in the Waikato River entrance



Set net prohibition in the Raglan Harbour entrance

A GUIDE TO THE LAW

This is a summary of the amateur fishing laws of New Zealand as they relate to recreational fishing. If you do not read English, have someone translate this summary for you. These laws are subject to change at any time and without prior notice. There are heavy penalties for breaching these laws.

Maori

He whakarāpopototanga tēnei o ngā ture o Aotearoa e pā ana ki ngā mahi hi ika mō te taha ki te hi ika takakau. Mehemea kāore koe i te mōhio ki te kōrero Pākehā, kāti tikina tētahi tangata hei whakamaōri i te pānui nei. Tērā ka whakarekēhia ngā ture nei ahakoa he aha te wā, ā, kāore e pānuitia i te tuatahi. Ka utaina he whiu taumaha ki runga i ngā tāngata e whawhati ana i ngā ture nei.

Cook Islands Maori

E akamāramarama'anga teia tei atu potō'ia no runga i te au ture tautai amatiua o Niu Tirenī (koia oki, te tautai, kare koe e tutaki'ia no te rave'anga i te reira) no runga i te tautai pae tarekareka me kare pae tamataora. Mei te mea e, kare koe e mārāma i te tatau i te reo Papaa, kia pati koe i tetai tangata kia uri atu i teia akamāramarama'anga tei atu potō'ia ki roto i toou uaorai reo. Ka rauka ua teia au ture nei kia tau'i'ia i tetai ua atu tuātau, e ma te kare te reira tau'anga e akakite'ia atu na mua. E au utunga pakari tikai tei akono'ia na tei aati i teia au ture nei.

Niuean

Ko e tau talahauaga fakaku a nei hogaao ke he tau tagata fa o futiika ke kai na lautolu ni (amateur) mo e tau mata fakatufono ne fakatokotoka. Ka nakai maeke ia koe ke totou Palagi, ti moua taha tagata ke totou mo e fakamaama atu kia koe e talahauaga ku nei. Ko e tau mata fakatufono nei to huihui he ha magaaho ka e nakai fai fakailoaga ke he heagaapi. Kua mamafa lahi e tau fakahala ke he tau tagata ka holia e tau mata fakatufono nei.

Tongan

Ko ha fakamatata fakanounou 'eni 'o e ngaahi lao ki he toutai 'amatua 'i Niu'u Sila 'i he 'enau fekau'aki mo e toutai va'ingā. Kapau 'oku 'ikai te ke lava 'o lautohi faka-Pilitānia, 'oange 'a e fakamatala ni ki ha taha ke ne fakatonu atu. '

E lava ke liliu 'a e ngaahi laō ni 'i ha fa'ahinga taimi pē pea ta'e fai mu'omu'a ha fakatokanga. 'Oku 'i ai ha ngaahi tautea mamafa 'o ka maumau'i 'a e ngaahi laō ni.

Samoan

O faamatalaga 'oto'oto nei ua patino i tulāfono a Niu Sila mo faiva fagota faasamasamana e pei take out 'le' le faiva fagota tafafao.

Afai e te lē iloa faitau le gagana faa-Peretania, tapa ane i se isi na te faaliliuina nei faamatalaga 'oto'oto mo 'oe. Ua mafai ona suia nei tulāfono i soo se taimi e aunoa ma ni lapata'iga. Ua iai ni faasalaga mamafa e oo iai pe afai e soliiina nei tulāfono.

Chinese

這是和娛樂性釣魚有關的紐西蘭業餘釣魚法概要。如果你不懂得英文，請他人為您翻譯此文。該項法令隨時變更且不會預先通知。違法者將處以重罰。

Vietnamese

Đây là bản tóm tắt các đạo luật đánh cá cho những người đánh cá không chuyên nghiệp liên quan đến việc đánh cá để giải trí. Nếu bạn không đọc được tiếng Anh thì bạn hãy nhờ người khác dịch bản tóm tắt này cho bạn. Các luật này có thể thay đổi bất cứ lúc nào mà không báo trước. Nếu bạn vi phạm các đạo luật này bạn sẽ bị trừng phạt.

Contact Fishery Officers

Ministry of Fisheries,
Whangarei (09) 470 0580
Auckland (09) 820 1990
Mt Maunganui (07) 571 2820
Whitianga (07) 866 0549
Hamilton (07) 859 3126
Kaitiaki (09) 408 6024
Opotiki (07) 315 5232

For information on fishing rules
www.fish.govt.nz

0800 4 POACHER
(0800 476 224 to report illegal poaching)



Auckland and Kermadec Fishery Management Area Recreational fishing rules

(includes Northland, Waikato and the Bay of Plenty)

Effective from 1st October 2011. Subject to change without notice

