

## Quarterly Report

# FISHERIES AND AQUACULTURE PRODUCTION AND TRADE

PERIOD ENDING SEPTEMBER 2010

### OVERVIEW

- α Total landings from New Zealand wild fisheries in the year ended Sept 2010 increased 2.4% to 431 thousand tonnes compared to the year ended Sept 2009. Lower catches of inshore finfish and pelagics were offset by higher catches of inshore shellfish and deepwater species.
- α The total volume of exports of seafood products in the year ended Sept 2010 increased by 7.7% to 297 thousand tonnes compared to the year ended Sept 2009.
- α The total value of exports of seafood products in the year ended Sept 2010 decreased by 0.7% to \$1.45 billion compared to the year ended Sept 2009.
- α The continuing strength of the Australian and Chinese economies has assisted demand for New Zealand seafood from these markets. Demand elsewhere has been depressed, especially in Europe and the US.
- α The outlook is for continuing demand growth in the emerging economies in Asia and the Australian market. Demand in other markets is expected to be restrained, with ongoing risks in economies of European countries and the US where consumer spending is low.

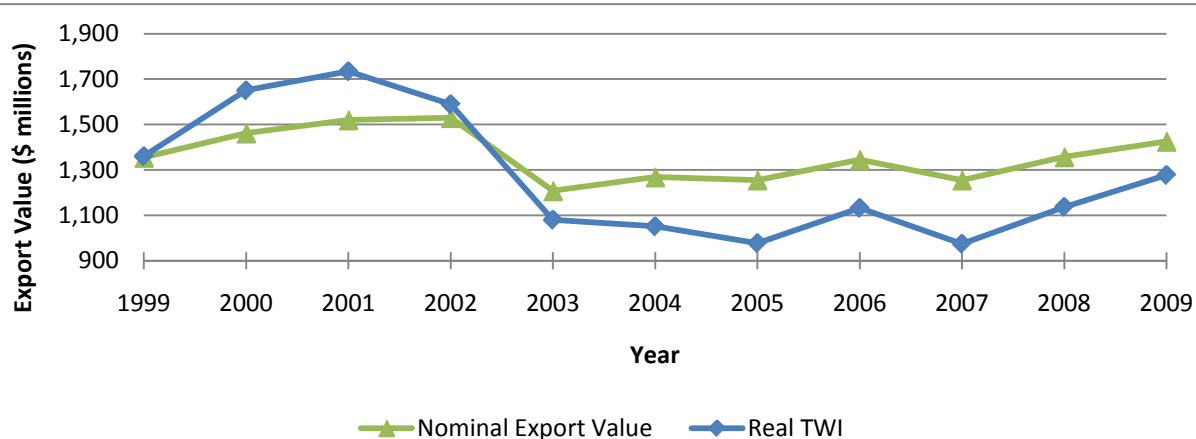
### OPERATING ENVIRONMENT

During the third quarter of 2010 the soft recovery from the 2008/09 global recession has faltered in New Zealand and the rest of the world. Forecasters continue to predict that the rate of economic growth in the economies of the majority of New Zealand's major trading partners will slow through till 2012. However, the economies of our important markets for seafood, Australia and Hong Kong/China, are forecast to continue to grow.

With 41% of New Zealand's exports going to countries with debt concerns (public debt greater than 50% of GDP), demand for New Zealand's exports, including seafood, will be depressed as these countries try to reduce debt over the next few years. This is especially the case in Europe with Greece, Portugal, Spain and Ireland currently implementing various austerity measures.

Growth forecasts in the US have been revised down and, as a result, the US has started a second round of quantitative easing (printing money) to try to stimulate the economy. While the Chinese economy is forecast to grow strongly over the next few years, the Chinese government has reduced the amount of capital available for investment. Interest rates across Asia are being lifted to suppress increasing inflationary pressures.

FIGURE 1: ANNUAL EXPORT VALUES: NOMINAL AND REAL (GDP DEFLATOR & TRADE WEIGHTED INDEX)



These are indicators that the recovery from the global financial crisis has not been as robust as first thought. While there is some risk of a double dip recession, the general outlook for the global economy is one of subdued economic growth over the next 15 months.

This will mean that certain markets will continue to demand less New Zealand seafood products. Markets in Southern Europe (especially Spain) and the United Kingdom continue to be depressed and values for deepwater species (hoki and hake) have been slow to recover.

Exchange rates are an important driver of revenue and profits (in \$NZ) for the seafood sector. The current quantitative easing that US is going through is depreciating the value of US\$. This of course impacts on the exchange rate with the US\$ driving the NZ\$ up. As other countries consider similar fiscal policies given the low economic growth forecasts, the NZ\$ is likely to fluctuate against most major currencies over the next 15 months.

The NZ\$/US\$ exchange rate will remain relatively high, in the short term, while the US implements its quantitative easing. NZIER forecasts an appreciation of the NZ\$ against the US\$ to around US\$0.77 in 2011. In 2012 and 2013, NZIER forecasts that the exchange rate will fall to around US\$0.70 and to US\$0.67 respectively. This suggests a difficult working environment over the medium to long term for seafood exporters to US markets and to markets denominated in US dollars.

NZIER forecast the exchange rate with the AU\$ to remain fairly stable through 2011, with the exchange rate fluctuating between AU\$0.79 to AU\$0.77 over following years.

Diesel prices (a major cost of catching fish and getting it to markets) began to increase from historic levels over the year ending Sept 2010. The retail price for diesel sold in New Zealand increased by 25% from mid-October 2009 to \$1.25 a litre at the end of October 2010. This price is still substantially lower than the peak high prices in mid 2008 (see annex, figure 1).

## LANDINGS AND EXPORTS

### Landings

Total wild landings for the year to Sept 2010 were 431 thousand tonnes, up 2.4% on 2009 but down 3.3% on 2008. Table 1 shows the species grouping contributions to landings.

TABLE 1: ANNUAL LANDINGS VOLUMES

	Sept 2010 Year (tonnes)	Change from Sept 2009 Year (%)
Aquaculture	No data	No data
Deepwater	191,711	7.29%
Inshore Finfish	46,699	-0.73%
Inshore Shellfish	3,852	9.25%
Pelagics	127,108	-0.89%
<b>Total Landings</b>	<b>431,421</b>	<b>2.38%</b>

### Exports

Export volumes were up by 7.7% in the year ending Sept 2010 from the year ending Sept 2009 however the value of exports dropped by 0.7% over the same period. The drop in export value was caused by a significant decrease in the export value of the aquaculture species (down 16.6%) from the year ending Sept 2009. This fall in the value of aquaculture species is primarily attributable to a decrease of 29.3% in export earnings for mussels.

The higher NZ\$ against the Euro and US\$ also contributed to the drop in export value.

### DEEPWATER

Major species for export in this group include (in order of export value) hoki, orange roughy, ling, southern blue whiting, hake, oreo dory and scampi.

Key variations in export value between the year ending Sept 2010 and the year ending Sept 2009 are:

TABLE 2: ANNUAL EXPORT VOLUMES AND VALUES

	Sept 2010 Year (tonnes)	Change from Sept 2009 Year (%)	Sept 2010 Year (millions)	Change from Sept 2009 Year (%)
Aquaculture	41,494	3.39%	\$252.4	-16.57%
Deepwater	81,895	18.72%	\$341.3	-1.58%
Inshore Finfish	16,112	5.54%	\$107.8	-3.03%
Inshore Shellfish	3,853	20.82%	\$273.6	13.73%
Pelagics	100,873	4.36%	\$207.9	0.98%
<b>Total Exports</b>	<b>297,368</b>	<b>7.67%</b>	<b>\$1,445.5</b>	<b>-0.70%</b>

- α **Southern blue whiting** up 8.6%
- α **Hoki** up 3.9%
- α **Scampi** down 0.2%
- α **Orange roughy** down 0.9%
- α **Oreo dory** down 2.5%
- α **Ling** down 9.6%
- α **Hake** down 26.4%

The total export value of hoki, orange roughy, ling, southern blue whiting, hake, oreo dory and scampi was \$341.3M for the year ending Sept 2010.

Hoki is the most important deepwater export species earning \$161.0M in export revenue during the year ending Sept 2010. This is up from \$154.9M for the year ending Sept 2009. Australian markets accounted for 30.7% of this revenue with China (20.2%), Germany (15.3%) and France (12.4%) being the other major markets. The export revenue for the year to Sept 2010 is down for China and Australia and up for Germany and France from the year to Sept 2009.

Exports earnings for the year to Sept 2010 for scampi (down \$0.05M), orange roughy (down \$0.5M), oreo dory (down \$0.5M), ling (down \$4.0M) and hake (down \$9.0M) were lower than the year to Sept 2009. Southern blue whiting export earnings (up \$2.5M) improved between 2009 and 2010.

## PELAGICS

Pelagic species have been treated separately in this report particularly as these species are more susceptible to high degrees of variation in catch from year to year. The main pelagic species by value are squid, jack mackerel, the tunas, barracouta and blue mackerel.

Key variations in export value between the year ending Sept 2010 and the year ending Sept 2009 are:

- α **Blue mackerel** up 76%
- α **Squid** up 12.4%

- α **Tunas** down 1.0%
- α **Barracouta** down 10.9%
- α **Jack mackerel** down 19.9%

The total export value for this group for the year ending Sept 2010 was \$207.9 million representing an increase of 1.0% from the year ending September 2009.

Products from the pelagic species are exported to over 100 countries, with the key markets (by value) being China (17.5%), Japan (10.4%), Australia (8.8%), Korea (8.0%) and Spain (4.0%).

Squid was the highest export earner making \$86.1m in export revenue in the year ending Sept 2010. China accounted for 25.6% of this value, with Korea (18.7%), Australia (15.2%), US (14.6%) and Greece (9.1%) being the other major markets. Squid export earnings were up \$9.5M from the year ending Sept 2009. Squid export earnings to US increased by just under \$9M between 2009 and 2010, and earnings from China increased by just under \$6.5M over the same period. However, export earnings for Greece decreased by just under \$5.5M during the same period.

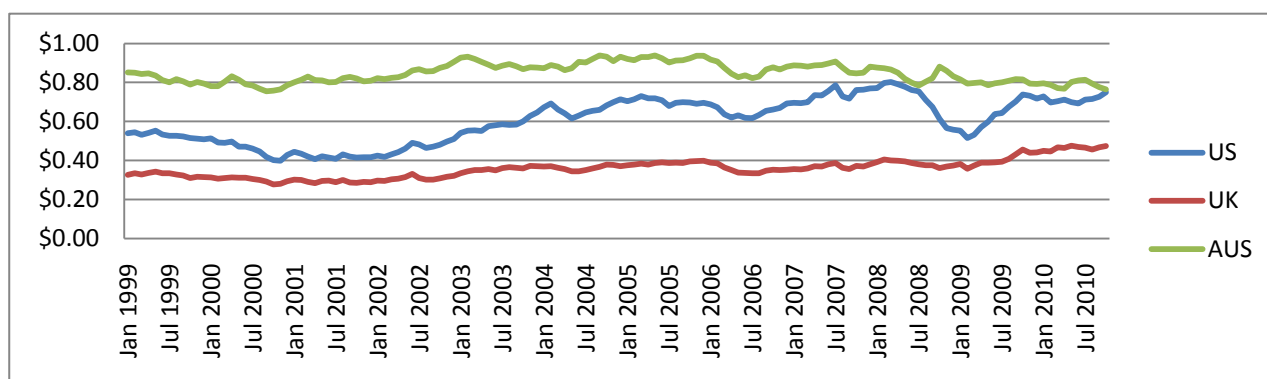
Mackerels (blue and jack) together made \$59.7M in the year ending Sept 2010, down \$4.1M on the year ending Sept 2009. Export earnings from blue mackerel increased by 76% (up \$6.8M) while export earnings for jack mackerel dropped 19.9% (down \$10.9M) over the same period. Tunas contributed \$33.8M in export value in the year ending Sept 2010 made up from skipjack (32.5%), bluefin (29.9%), albacore (18.6%) and big eye (7.1%). Over the same period, barracouta made \$25.7M.

## INSHORE FINFISH

Major species for export by value in this group include (in order of export value) snapper, bluenose, small sharks, flatfish, red cod, groper and john dory.

Export value for the main inshore finfish species in the year ending Sept 2010 was \$107.8M. This is down 3.0% from the year ending Sept 2009.

FIGURE 3: QUARTERLY EXCHANGE RATE VALUES



Snapper is the most important export in this group worth \$33.2M in the year ending Sept 2010, largely as chilled gutted whole fish. Australia is the key market taking 68.4% of exports. Other important markets are US (13.2%) and Italy (7.2%). Both volumes and prices in the Australian market have been stable over the past 12 months. Traditional markets in Japan and Korea provided only 4.5% of the total export revenue in the year ending Sept 2010.

Bluenose is almost exclusively exported to Australia and US (75.2% and 24.5% respectively) – worth \$12.6M in the year ending Sept 2010. The Australian market has remained firm and prices continue to rebound in the US from the 2009 low.

These inshore fish are also popular in the domestic market, which takes about a third of the snapper catch. The tarakihi catch is almost the same volume as snapper but very little is exported – around 5%. This is a key inshore finfish in the local market.

Flatfish includes a number of species managed as a group under the QMS, including soles and flounder. Export value for the year ending Sept 2010 for this group was \$10.6M (average for last 4 years was \$11.5M).

School shark was the most important shark species in terms of export value at \$8.25M in the year ending Sept 2010. Total export value of all the shark species during this period was \$24.4 million.

Red cod earned around \$6M in the year to Sept 2010. John dory and groper earned around \$5M each in exports for the year ending Sept 2010 and trevally about \$3.3M.

## INSHORE SHELLFISH

Rock lobster is the highest value seafood export, grossing over \$219M in the year ending Sept 2010. This was up 15.6% from the year ending Sept 2009. Most of this value is from live exports into Hong Kong (85.4%), with China (8.8%) and Japan (3.5%) the other significant markets. There has been an increase in the amount of rock lobster being exported directly to China over the past year. The amount of rock lobster export to China in the year to Sept 2009 was less than 0.1% of the total export value for rock lobster. In the year to Sept 2010 this has increased to 8.8%. This increase is likely due to the recent free trade agreement with China allowing rock lobster to be exported directly rather than going through Hong Kong on its way to China.

The value of rock lobster in the Hong Kong market has been increasing steadily over the last 9 months. Export

prices have reached \$102.75/kg in Sept 2010. Returns from this species are currently highly dependent on the Hong Kong market despite the increased volumes being exported directly to China.

Paua (abalone) exports brought in \$54.7M in the year ending Sept 2010 – up 7.0% from the year ending Sept 2009. This is spread across Hong Kong (55.3%), Singapore (34.4%), Australia (4.7%) and other markets (5.6%). Values have been steady across markets over the past four years averaging \$71/kg until the second half of 2009 when prices dropped to \$47/kg. Values have increased in Australia but the value in the Hong Kong and Singapore markets has continued to fall.

Scallops are a minor export earning \$0.73M in the year ending Sept 2010. This is down from \$3.1M in the year ending Sept 2009. This decrease was caused by a decrease in demand from Australia and Vietnam. The biggest export markets for scallops are France (35.8% by value), French Polynesia (20.8%) and Australia (3.6%).

Dredge oysters are mainly harvested from Foveaux Strait. Domestic demand for Foveaux Strait oysters exceeds supply, therefore, none are exported. Domestic prices for Foveaux Strait oysters are driven by the high demand and the value of the catch is somewhere around \$12M per annum. The catch of Foveaux Strait oysters for 2009 was 838 tonnes, or 8.22 million oysters.

## AQUACULTURE

Currently aquaculture export species are limited to green lipped mussels, salmon and oysters. Export volume of 41,494 tonnes brought \$252.4M in export earnings during the year to Sept 2010. Of this, green lipped mussels accounted for \$158.8M (down 29.3% on the year ending Sept 2009), salmon 75.9M (up 23.2% on the year ending Sept 2009) and oysters \$17.7M (up 8.0% on the year ending Sept 2009).

Key markets for green lipped mussels are United States (30.1% by value), Australia (12.1%), Spain (8.1%) and Korea (7.7%). Salmon went to Japan (30.7%), Australia (25.0%), United States (20.0%) and Taiwan (10.0%). While the US is the most important market for green lipped mussels, export earnings were down \$14.9M (23.7%) from Sept 2009 year. Green lipped mussel export earnings were also down from the Sept 2009 year for Korea (down 3.6M), Australia (down 2.2M) and Spain (down 1.3M).

Oysters were exported to Australia (51.8% by value), Hong Kong (9.6%), French Polynesia (8.9%) and New Caledonia (6.7%).

---

## NOTES

1. Value at first landing data – standard for OECD figures – is not available for the New Zealand catch.
2. The nominal export value was deflated by using the implicit price deflator for gross national expenditure produced by Stats NZ to produce the real export value (inflation adjusted figure).
3. Data for aquaculture species harvest volumes and value are not available at present.
4. All export statistics are sourced from Statistics New Zealand and the New Zealand Seafood Industry Council.
5. All landings and production information are sourced from the Ministry of Fisheries. All landings information is in greenweight, which is whole fish prior to any processing or cutting.
6. Table totals do not calculate from the category totals as categories only include key species. Totals reflect all recorded landings and exports.
7. Export values are NZ\$ free on board (FOB), which is the value of goods at New Zealand ports before export and includes cost of transport to port.

## REFERENCES

*Quarterly Predictions December 2010*, New Zealand  
Institute for Economic Research, 25/11/2010

## STATISTICAL ANNEX

Table 1: Annual Quota Value (\$ million) for the Top 40 QMS species (30 September years)

Species	2004	2005	2006	2007	2008	2009
<b>TOTAL (all QMS species)</b>	<b>3,865.7</b>	<b>3,729.7</b>	<b>3,796.1</b>	<b>3,824.5</b>	<b>3,939.4</b>	<b>4,016.9</b>
Hoki	695.0	541.0	626.8	692.8	729.6	814.6
Rock lobster (CRA and PHC)	644.3	584.9	569.9	621.3	634.4	770.5
Paua	354.9	378.7	365.6	390.0	360.8	304.3
Orange roughy	324.4	299.7	276.9	250.3	319.2	282.0
Snapper	282.4	257.6	226.4	252.2	279.9	262.5
Ling	195.6	219.5	196.9	231.4	234.7	246.2
Hake	147.3	123.4	187.7	141.0	155.7	135.5
Scampi	...	115.7	127.5	119.4	131.4	132.3
Arrow squid	240.3	137.9	297.5	169.6	108.5	116.5
Silver warehou	71.3	70.9	62.7	82.5	83.3	82.6
Tarakihi	65.4	61.9	93.6	78.9	85.6	74.9
Oreo	67.5	67.5	72.3	84.6	86.5	74.4
Southern blue whiting	52.3	58.6	62.0	52.8	63.7	74.3
Jack mackerel	99.5	58.0	27.0	26.5	27.7	53.6
Bluenose	43.4	50.3	43.0	57.8	53.7	43.3
Barracouta	36.9	43.3	41.1	37.7	41.6	40.5
Stargazer	29.3	25.6	25.2	24.1	28.3	39.3
Blue cod	38.7	45.1	56.6	46.0	41.1	38.7
Oysters dredge (OYS and OYU)	29.5	28.6	23.7	22.8	26.0	36.5
School shark	41.9	50.0	44.6	45.1	40.1	34.9
Alfonsino & long-finned beryx	27.8	29.3	29.5	36.0	30.9	30.9
Scallop	47.8	18.2	36.1	30.9	30.5	27.7
Gurnard	16.6	13.5	13.9	15.7	20.7	27.3
Hapuku & bass	24.9	32.3	35.6	34.5	29.1	21.7
Blue warehou	20.9	15.8	13.8	11.3	19.3	19.3
Rig	22.4	21.2	13.9	17.8	20.8	18.7
Flatfish	18.0	18.1	16.7	14.9	20.3	17.6
White Warehou	13.0	13.9	8.2	5.2	15.3	16.8
Southern bluefin tuna	..	48.6	14.1	10.6	12.7	15.4
Trevally	19.7	16.6	15.3	12.9	19.1	14.8
John dory	10.8	8.7	10.8	11.5	14.8	13.7
Blue mackerel	18.3	28.8	14.8	13.7	13.8	13.2
Red cod	71.4	39.6	14.0	21.1	12.7	13.1
Green-lipped mussel	...	10.1	10.5	12.1	12.0	12.2
Gemfish	6.6	6.5	11.7	10.2	10.8	7.7
Kahawai	...	9.8	6.0	5.5	7.1	7.1
Elephant fish	8.1	8.0	10.2	15.2	16.2	6.9
Spiny dogfish	...	4.7	6.7	8.0	4.3	6.1
Kingfish	3.3	4.0	2.9	4.0	3.6	5.4
Kina	4.5	4.7	8.2	8.2	5.5	4.9

Source: Statistics New Zealand

Table 2: Annual Landings of Key Species: 2010, 2009 (30 September years)

	Sept 2010 Year (kgs)	Sept 2009 Year (kgs)	Change from Sept 2009 Year (%)
<b>Inshore Finfish</b>	<b>46,698,700</b>	<b>47,044,460</b>	<b>-0.73%</b>
Snapper	6,229,119	6,399,873	-2.67%
Bluenose	2,111,337	2,116,300	-0.23%
John Dory	618,673	664,470	-6.89%
Tarakihi	5,546,727	5,584,683	-0.68%
Blue Cod	2,133,399	2,426,077	-12.06%
<b>Deepwater</b>	<b>191,710,660</b>	<b>178,685,074</b>	<b>7.29%</b>
Hoki	107,212,604	89,475,143	19.82%
Oreo Dory	16,814,551	15,882,833	5.87%
Orange Roughy	10,279,928	12,048,800	-14.68%
Southern Blue Whiting	39,438,184	37,345,984	5.60%
Scampi	685,668	593,620	15.51%
Hake	4,715,264	10,225,622	-53.89%
Ling	12,570,880	13,113,072	-4.13%
<b>Inshore Shellfish</b>	<b>3,851,917</b>	<b>3,525,806</b>	<b>9.25%</b>
Rock Lobster	2,842,223	2,517,939	12.88%
Paua	1,009,694	1,008,109	0.16%
<b>Aquaculture</b>	<b>N/A</b>	<b>N/A</b>	<b>N/A</b>
Green Lipped Mussels	N/A	N/A	N/A
Oysters	N/A	N/A	N/A
Salmon and Salmonidae	N/A	N/A	N/A
<b>Pelagics</b>	<b>127,107,766</b>	<b>128,254,004</b>	<b>-0.89%</b>
Squid	32,435,623	46,310,859	-29.96%
Jack Mackerel	42,941,921	40,582,432	5.81%
Blue Mackerel	11,807,475	6,739,971	75.19%
Barracouta	28,447,527	26,443,613	7.58%
Tunas	10,929,623	7,766,636	40.73%
<b>Total Production</b>	<b>431,420,678</b>	<b>421,396,359</b>	<b>2.38%</b>

Source: Ministry of Fisheries

Table 3: Top Ten exports by value during the 2009 calendar year

Species	Export Value (FoB)
Mussels	\$202,466,693
Rock Lobster	\$184,231,379
Hoki	\$152,464,610
Squid	\$75,302,629
Salmons (all)	\$60,781,336
Orange Roughy	\$51,029,583
Paua	\$47,934,184
Fish meal (unfit for human consump.)	\$47,236,863
Mackerel, Jack	\$45,928,432
Other preparations	\$43,596,046

Source: New Zealand Seafood Industry Council (SeaFIC)

Table 4: Top Ten exports by volume during the 2009 calendar year

Species	Export Volume (kgs)
Squid	37,891,500
Hoki	34,858,472
Mussels	33,842,226
Mackerel, Jack	27,651,895
Fish meal (unfit for human consump.)	22,017,418
Southern Blue Whiting	19,119,981
Barracouta	17,302,506
Tunas (all)	8,084,964
Mackerel, Blue	7,814,142
Ling	6,529,710

Source: New Zealand Seafood Industry Council (SeaFIC)



Table 5: Annual chain-volume series (GDP) expressed in 1995/96 prices<sup>(1)</sup>

	Fishing (\$million)	Annual Percentage Change (%)	Total gross domestic product (\$million)	Fishing Percentage of GDP (%)
<i>Series ref: SNC</i>	<i>S1RB01ACT4</i>		<i>S1RB01</i>	
1990	253	-3.80%	80,129	0.32%
1991	265	4.74%	80,162	0.33%
1992	262	-1.13%	79,105	0.33%
1993	276	5.34%	79,984	0.35%
1994	253	-8.33%	85,136	0.30%
1995	256	1.19%	89,675	0.29%
1996	283	10.55%	93,420	0.30%
1997	275	-2.83%	96,666	0.28%
1998	271	-1.45%	98,335	0.28%
1999	275	1.48%	98,842	0.28%
2000	292	6.18%	104,096	0.28%
2001	272	-6.85%	106,553	0.26%
2002	264	-2.94%	110,407	0.24%
2003	231	-12.50%	115,829	0.20%
2004	221	-4.33%	120,813	0.18%
2005	210	-4.98%	125,361	0.17%
2006	218	3.81%	129,079	0.17%
2007	208	-4.59%	131,438	0.16%
2008	197	-5.29%	135,543	0.15%
2009	190	-3.55%	134,028	0.14%

(1) Year ended 31 March

Source: Statistics New Zealand, Compiled by Industry Development team, Strategy Group, Ministry of Fisheries

Table 6: Registered Vessels

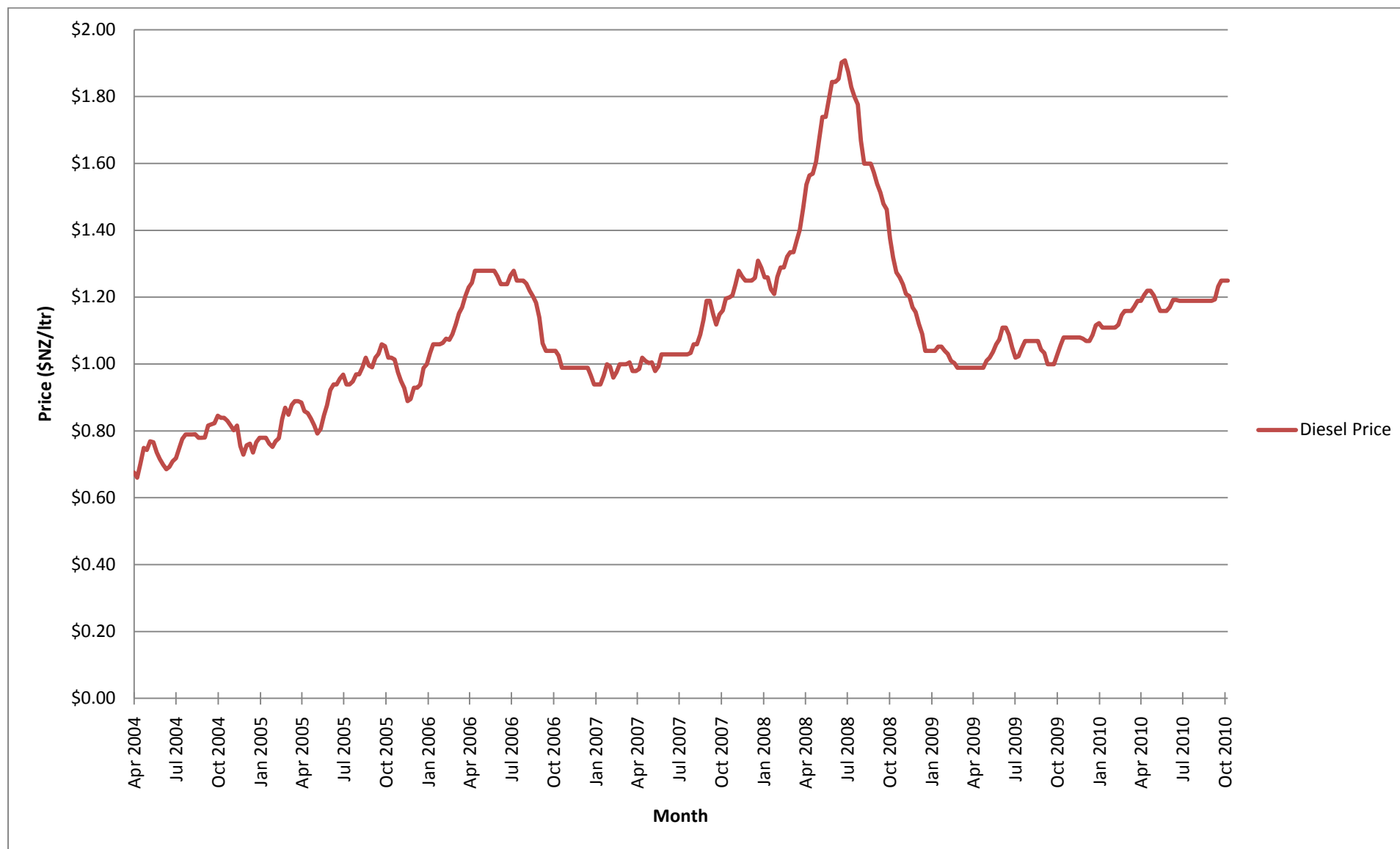
Year	Domestic		Foreign Charter		Grand Total	
	Number of Vessels	Gross Tonnage	Number of Vessels	Gross Tonnage	Number of Vessels	Gross Tonnage
2005	1,383	68,941	32	61,966	1,415	130,907
2006	1,336	66,014	30	59,832	1,366	125,846
2007	1,268	67,605	26	52,517	1,294	120,122
2008	1,241	70,212	23	46,512	1,264	116,725
2009	1,256	70,464	22	42,633	1,278	113,097

Notes:

1. Registered vessels in this table are vessels that were registered as commercial fishing vessels during that year
2. Gross Tonnage is the gross tonnage of the vessel as submitted by the individual/company registering the vessel. It is a unitless index related to a ship's overall internal volume and is calculated based on "the moulded volume of all enclosed spaces of the ship".

Source: Ministry of Fisheries

Figure 1: Diesel Price



Source: Ministry of Economic Development

Table 7: Quarterly Domestic Fish Prices for all of New Zealand

Year and Quarter		Wet Fish												Other Seafood			
		Tarakihi	Gurnard	Snapper	Sole	Salmon Fillets	Red Cod	Salmon Steaks	Lemon Fish	Monk Fish	Blue Cod	Trevally	Hoki	Salmon, Canned	Tuna, Canned	Mussels, Live	Mussels, Marinated
		\$ per kg												\$ per 210g	\$ per 185g	\$ per kg	\$ per 375g
2005	Mar	19.01	18.20	28.68	20.97	23.79	12.70	23.26	18.61	18.71	25.64	14.98	11.85	2.08	2.05	3.62	4.63
	Jun	18.87	18.18	28.59	20.61	24.64	12.76	23.62	17.52	18.03	27.63	14.77	12.57	2.17	2.01	3.63	4.61
	Sep	19.41	18.62	28.51	21.11	23.47	13.40	23.84	18.03	18.03	26.71	15.24	10.69	2.15	2.03	3.67	4.58
	Dec	19.47	18.61	29.14	20.02	23.78	13.87	23.41	17.99	18.08	26.56	15.21	..	2.10	1.99	3.67	4.59
2006	Mar	19.70	18.73	29.21	20.82	25.37	13.55	24.25	17.90	18.97	24.76	14.47	..	2.02	1.97	3.64	4.74
	Jun	20.25	20.08	29.97	20.82	25.72	12.91	24.85	17.99	..	..	..	..	..	..	..	..
	Sep	21.34	20.70	31.34	20.50	25.73	13.39	23.99	18.39	..	24.12	..	11.54	2.12	1.96	3.49	4.74
	Dec	21.84	20.94	31.35	20.77	26.23	14.30	25.20	18.88	17.90	27.83	15.20	..	2.20	1.97	3.40	4.69
2007	Mar	21.75	21.02	32.52	20.74	26.41	13.81	24.49	20.37	18.20	..	16.12	..	2.33	1.91	3.32	4.74
	Jun	21.87	21.29	33.20	21.77	27.08	13.84	25.13	19.85	19.35	..	15.79	..	2.41	1.91	3.34	4.70
	Sep	23.44	22.86	34.69	22.28	26.54	13.52	23.12	19.46	20.37	..	..	10.17	2.42	1.85	3.38	4.75
	Dec	24.47	22.75	34.10	21.78	27.53	14.04	23.25	19.43	20.38	..	16.75	..	2.43	1.91	3.21	4.73
2008	Mar	24.49	23.04	34.17	22.34	27.94	14.33	26.31	19.87	21.04	..	15.36	13.36	2.40	1.77	2.91	4.78
	Jun	25.09	24.10	35.27	22.30	27.73	14.61	26.30	19.73	20.36	31.65	16.73	..	2.47	1.87	3.09	4.74
	Sep	26.09	25.05	35.29	24.27	27.93	15.31	25.27	..	..	33.20	..	13.15	2.66	1.97	3.09	4.98
	Dec	26.20	25.33	35.98	23.63	27.61	16.14	25.27	..	..	..	..	..	2.65	2.20	3.22	5.23
2009	Mar	26.77	25.93	36.34	22.36	28.65	15.89	23.09	..	..	34.50	16.28	..	2.68	2.46	2.94	5.14
	Jun	25.37	26.35	37.18	23.54	28.55	15.42	25.55	..	..	34.43	..	..	2.78	2.54	3.20	5.17
	Sep	27.11	26.82	38.51	22.45	28.61	16.22	26.25	23.03	..	..	..	12.93	2.96	2.42	3.29	5.25
	Dec	27.51	26.64	37.87	23.24	27.98	15.83	24.98	22.24	21.56	..	17.21	..	2.82	2.53	3.09	5.33
2010	Mar	26.93	25.77	38.13	22.83	29.28	16.27	28.75	22.34	22.18	33.81	19.92	..	2.73	2.46	3.26	5.26

Source: Statistics New Zealand

Table 8: Inshore Finfish

Date	Quarterly Export Volume (kgs)	Quarterly Export Value (\$NZ)	Quarterly Export Price (\$NZ/kg)	Yearly Export Volume (kgs)	Yearly Export Value (\$NZ)	Yearly Export Price (\$NZ/kg)
Mar-06	4,837,835	\$26,120,665	\$5.40			
Jun-06	4,711,183	\$24,989,811	\$5.30			
Sep-06	3,366,320	\$23,862,291	\$7.09			
Dec-06	4,315,707	\$25,995,768	\$6.02			
Mar-07	5,351,009	\$29,878,685	\$5.58	16,093,998	\$98,996,537	\$6.15
Jun-07	3,733,321	\$23,517,730	\$6.30			
Sep-07	2,693,961	\$19,604,354	\$7.28			
Dec-07	3,970,389	\$26,906,020	\$6.78			
Mar-08	4,330,370	\$27,306,273	\$6.31	15,233,705	\$101,320,499	\$6.65
Jun-08	3,536,360	\$24,110,141	\$6.82			
Sep-08	3,396,586	\$22,998,065	\$6.77			
Dec-08	3,851,867	\$28,626,036	\$7.43			
Mar-09	3,873,014	\$31,503,138	\$8.13	15,266,353	\$111,190,099	\$7.28
Jun-09	3,619,990	\$26,085,833	\$7.21			
Sep-09	3,921,482	\$24,975,092	\$6.37			
Dec-09	3,777,300	\$27,974,133	\$7.41			
Mar-10	4,188,551	\$30,134,496	\$7.19	16,111,903	\$107,826,547	\$6.69
Jun-10	3,763,166	\$25,292,238	\$6.72			
Sep-10	4,382,886	\$24,425,680	\$5.57			

Source: Statistics New Zealand and New Zealand Seafood Industry Council

Table 8a: Snapper

Date	Quarterly Export Volume (kgs)	Quarterly Export Value (\$NZ)	Quarterly Export Price (\$NZ/kg)	Yearly Export Volume (kgs)	Yearly Export Value (\$NZ)	Yearly Export Price (\$NZ/kg)
Mar-06	1,173,840	\$7,662,780	\$6.53			
Jun-06	897,632	\$6,442,335	\$7.18			
Sep-06	779,279	\$6,025,557	\$7.73			
Dec-06	1,329,973	\$9,288,246	\$6.98			
Mar-07	1,054,371	\$8,148,570	\$7.73	3,794,576	\$29,708,468	\$7.83
Jun-07	722,830	\$6,268,493	\$8.67			
Sep-07	687,402	\$6,003,159	\$8.73			
Dec-07	1,089,309	\$9,804,491	\$9.00			
Mar-08	896,601	\$7,884,382	\$8.79	3,473,496	\$31,378,976	\$9.03
Jun-08	706,628	\$6,376,931	\$9.02			
Sep-08	780,958	\$7,313,172	\$9.36			
Dec-08	1,074,372	\$10,787,963	\$10.04			
Mar-09	1,020,352	\$10,512,400	\$10.30	3,812,634	\$37,232,521	\$9.77
Jun-09	832,210	\$7,762,784	\$9.33			
Sep-09	885,700	\$8,169,374	\$9.22			
Dec-09	1,047,172	\$9,750,971	\$9.31			
Mar-10	887,649	\$8,543,036	\$9.62	3,569,933	\$33,193,501	\$9.30
Jun-10	790,256	\$7,140,702	\$9.04			
Sep-10	844,856	\$7,758,792	\$9.18			

Source: Statistics New Zealand and New Zealand Seafood Industry Council

Table 8b: Bluenose

Date	Quarterly Export Volume (kgs)	Quarterly Export Value (\$NZ)	Quarterly Export Price (\$NZ/kg)	Yearly Export Volume (kgs)	Yearly Export Value (\$NZ)	Yearly Export Price (\$NZ/kg)
Mar-06	427,332	\$3,416,304	\$7.99			
Jun-06	317,970	\$3,055,829	\$9.61			
Sep-06	298,557	\$2,856,472	\$9.57			
Dec-06	364,035	\$3,177,292	\$8.73			
Mar-07	433,307	\$4,004,942	\$9.24	1,416,372	\$13,609,669	\$9.61
Jun-07	340,653	\$3,536,415	\$10.38			
Sep-07	278,377	\$2,891,020	\$10.39			
Dec-07	348,743	\$3,919,142	\$11.24			
Mar-08	387,036	\$4,117,570	\$10.64	1,333,426	\$14,502,013	\$10.88
Jun-08	326,866	\$3,459,676	\$10.58			
Sep-08	270,781	\$3,005,625	\$11.10			
Dec-08	333,592	\$4,019,914	\$12.05			
Mar-09	330,058	\$3,958,906	\$11.99	1,138,258	\$13,624,340	\$11.97
Jun-09	235,159	\$2,890,194	\$12.29			
Sep-09	239,449	\$2,755,326	\$11.51			
Dec-09	299,867	\$3,448,328	\$11.50			
Mar-10	331,870	\$3,707,636	\$11.17	1,091,405	\$12,636,111	\$11.58
Jun-10	212,057	\$2,526,960	\$11.92			
Sep-10	247,611	\$2,953,187	\$11.93			

Source: Statistics New Zealand and New Zealand Seafood Industry Council

Table 8c: John Dory

Date	Quarterly Export Volume (kgs)	Quarterly Export Value (\$NZ)	Quarterly Export Price (\$NZ/kg)	Yearly Export Volume (kgs)	Yearly Export Value (\$NZ)	Yearly Export Price (\$NZ/kg)
Mar-06	153,048	\$1,438,875	\$9.40			
Jun-06	125,639	\$1,313,105	\$10.45			
Sep-06	144,050	\$1,484,454	\$10.31			
Dec-06	155,612	\$1,582,031	\$10.17			
Mar-07	190,584	\$1,883,270	\$9.88	585,108	\$5,865,856	\$10.03
Jun-07	120,792	\$1,292,912	\$10.70			
Sep-07	118,120	\$1,107,643	\$9.38			
Dec-07	137,250	\$1,343,379	\$9.79			
Mar-08	175,932	\$1,736,936	\$9.87	513,651	\$5,172,828	\$10.07
Jun-08	98,660	\$1,059,479	\$10.74			
Sep-08	101,809	\$1,033,034	\$10.15			
Dec-08	130,956	\$1,506,871	\$11.51			
Mar-09	150,684	\$2,008,706	\$13.33	449,115	\$5,457,276	\$12.15
Jun-09	91,259	\$1,066,156	\$11.68			
Sep-09	76,216	\$875,543	\$11.49			
Dec-09	118,007	\$1,433,389	\$12.15			
Mar-10	169,524	\$1,793,267	\$10.58	429,898	\$4,968,519	\$11.56
Jun-10	71,950	\$881,387	\$12.25			
Sep-10	70,417	\$860,476	\$12.22			

Source: Statistics New Zealand and New Zealand Seafood Industry Council

Table 8d: Tarakihi

Date	Quarterly Export Volume (kgs)	Quarterly Export Value (\$NZ)	Quarterly Export Price (\$NZ/kg)	Yearly Export Volume (kgs)	Yearly Export Value (\$NZ)	Yearly Export Price (\$NZ/kg)
Mar-06	32,369	\$82,875	\$2.56			
Jun-06	28,399	\$188,868	\$6.65			
Sep-06	45,306	\$309,658	\$6.83			
Dec-06	10,246	\$68,760	\$6.71			
Mar-07	37,348	\$173,791	\$4.65	122,903	\$506,529	\$4.12
Jun-07	30,849	\$149,466	\$4.85			
Sep-07	44,460	\$114,512	\$2.58			
Dec-07	15,419	\$70,228	\$4.55			
Mar-08	12,791	\$70,539	\$5.51	99,515	\$498,073	\$5.01
Jun-08	17,734	\$151,809	\$8.56			
Sep-08	53,571	\$205,497	\$3.84			
Dec-08	10,686	\$111,213	\$10.41			
Mar-09	84,929	\$402,082	\$4.73	241,410	\$1,612,671	\$6.68
Jun-09	104,778	\$724,630	\$6.92			
Sep-09	41,017	\$374,746	\$9.14			
Dec-09	26,103	\$280,082	\$10.73			
Mar-10	36,622	\$413,161	\$11.28	127,259	\$1,254,647	\$9.86
Jun-10	31,102	\$316,969	\$10.19			
Sep-10	33,432	\$244,435	\$7.31			

Source: Statistics New Zealand and New Zealand Seafood Industry Council

Table 8e: Blue Cod

Date	Quarterly Export Volume (kgs)	Quarterly Export Value (\$NZ)	Quarterly Export Price (\$NZ/kg)	Yearly Export Volume (kgs)	Yearly Export Value (\$NZ)	Yearly Export Price (\$NZ/kg)
Mar-06	707	\$11,399	\$16.12			
Jun-06	10,095	\$121,898	\$12.08			
Sep-06	8,441	\$113,024	\$13.39			
Dec-06	2,065	\$39,318	\$19.04			
Mar-07	25,514	\$197,942	\$7.76	99,357	\$757,461	\$7.62
Jun-07	33,486	\$259,522	\$7.75			
Sep-07	38,292	\$260,679	\$6.81			
Dec-07	44,140	\$344,940	\$7.81			
Mar-08	21,774	\$169,026	\$7.76	107,518	\$914,464	\$8.51
Jun-08	19,748	\$200,770	\$10.17			
Sep-08	21,856	\$199,728	\$9.14			
Dec-08	19,993	\$190,876	\$9.55			
Mar-09	1,453	\$28,292	\$19.47	75,163	\$668,317	\$8.89
Jun-09	16,536	\$142,848	\$8.64			
Sep-09	37,181	\$306,301	\$8.24			
Dec-09	24,998	\$209,785	\$8.39			
Mar-10	1,522	\$28,972	\$19.04	53,846	\$541,501	\$10.06
Jun-10	16,772	\$185,097	\$11.04			
Sep-10	10,554	\$117,647	\$11.15			

Source: Statistics New Zealand and New Zealand Seafood Industry Council

Table 9: Deepwater Species

Date	Quarterly Export Volume (kgs)	Quarterly Export Value (\$NZ)	Quarterly Export Price (\$NZ/kg)	Yearly Export Volume (kgs)	Yearly Export Value (\$NZ)	Yearly Export Price (\$NZ/kg)
Mar-06	12,870,794	\$67,846,629	\$5.27			
Jun-06	12,753,920	\$74,663,419	\$5.85			
Sep-06	23,074,129	\$117,035,531	\$5.07			
Dec-06	26,238,898	\$111,236,350	\$4.24			
Mar-07	14,347,232	\$67,977,656	\$4.74	79,287,506	\$341,529,853	\$4.31
Jun-07	13,353,232	\$62,128,167	\$4.65			
Sep-07	25,348,144	\$100,187,680	\$3.95			
Dec-07	23,004,017	\$99,469,615	\$4.32			
Mar-08	15,376,438	\$74,117,326	\$4.82	74,622,672	\$340,295,349	\$4.56
Jun-08	14,652,188	\$64,302,192	\$4.39			
Sep-08	21,590,029	\$102,406,216	\$4.74			
Dec-08	18,235,062	\$91,480,990	\$5.02			
Mar-09	17,791,189	\$96,818,532	\$5.44	68,979,992	\$346,758,220	\$5.03
Jun-09	12,023,398	\$65,667,345	\$5.46			
Sep-09	20,930,343	\$92,791,353	\$4.43			
Dec-09	25,423,001	\$99,306,978	\$3.91			
Mar-10	13,591,461	\$62,491,818	\$4.60	81,894,752	\$341,296,616	\$4.17
Jun-10	15,836,941	\$73,003,456	\$4.61			
Sep-10	27,043,349	\$106,494,364	\$3.94			

Source: Statistics New Zealand and New Zealand Seafood Industry Council

Table 9a: Hoki

Date	Quarterly Export Volume (kgs)	Quarterly Export Value (\$NZ)	Quarterly Export Price (\$NZ/kg)	Yearly Export Volume (kgs)	Yearly Export Value (\$NZ)	Yearly Export Price (\$NZ/kg)
Mar-06	6,438,082	\$25,281,817	\$3.93			
Jun-06	7,870,580	\$35,435,551	\$4.50			
Sep-06	14,584,248	\$52,819,092	\$3.62			
Dec-06	12,410,953	\$40,261,105	\$3.24			
Mar-07	7,739,158	\$31,019,892	\$4.01	43,495,824	\$144,183,357	\$3.31
Jun-07	7,303,118	\$29,341,811	\$4.02			
Sep-07	16,042,595	\$43,560,549	\$2.72			
Dec-07	9,940,859	\$36,566,367	\$3.68			
Mar-08	8,344,846	\$32,255,211	\$3.87	39,404,525	\$149,232,307	\$3.79
Jun-08	8,139,069	\$29,383,384	\$3.61			
Sep-08	12,979,751	\$51,027,345	\$3.93			
Dec-08	9,155,090	\$38,070,507	\$4.16			
Mar-09	8,886,053	\$46,248,216	\$5.20	34,905,400	\$154,927,303	\$4.44
Jun-09	5,841,581	\$26,869,499	\$4.60			
Sep-09	11,022,676	\$43,739,081	\$3.97			
Dec-09	9,108,162	\$35,607,814	\$3.91			
Mar-10	7,399,304	\$29,637,031	\$4.01	43,876,284	\$161,017,817	\$3.67
Jun-10	9,230,116	\$36,652,540	\$3.97			
Sep-10	18,138,702	\$59,120,432	\$3.26			

Source: Statistics New Zealand and New Zealand Seafood Industry Council

Table 9b: Oreo Dory

Date	Quarterly Export Volume (kgs)	Quarterly Export Value (\$NZ)	Quarterly Export Price (\$NZ/kg)	Yearly Export Volume (kgs)	Yearly Export Value (\$NZ)	Yearly Export Price (\$NZ/kg)
Mar-06	1,121,251	\$4,522,285	\$4.03			
Jun-06	1,187,607	\$4,819,829	\$4.06			
Sep-06	1,117,865	\$4,849,059	\$4.34			
Dec-06	1,403,025	\$6,180,742	\$4.41			
Mar-07	1,449,973	\$6,114,749	\$4.22	5,459,677	\$20,738,580	\$3.80
Jun-07	1,688,441	\$6,027,130	\$3.57			
Sep-07	918,238	\$2,415,959	\$2.63			
Dec-07	1,665,255	\$4,841,527	\$2.91			
Mar-08	1,386,714	\$4,257,255	\$3.07	6,054,142	\$18,791,299	\$3.10
Jun-08	1,538,996	\$4,897,259	\$3.18			
Sep-08	1,463,177	\$4,795,258	\$3.28			
Dec-08	950,112	\$4,034,096	\$4.25			
Mar-09	1,641,725	\$5,807,814	\$3.54	5,156,336	\$19,495,144	\$3.78
Jun-09	1,109,025	\$4,083,000	\$3.68			
Sep-09	1,455,474	\$5,570,234	\$3.83			
Dec-09	1,110,269	\$4,196,929	\$3.78			
Mar-10	965,253	\$5,291,629	\$5.48	4,660,836	\$19,005,919	\$4.08
Jun-10	1,483,463	\$4,644,961	\$3.13			
Sep-10	1,101,851	\$4,872,400	\$4.42			

Source: Statistics New Zealand and New Zealand Seafood Industry Council

Table 9c: Orange Roughy

Date	Quarterly Export Volume (kgs)	Quarterly Export Value (\$NZ)	Quarterly Export Price (\$NZ/kg)	Yearly Export Volume (kgs)	Yearly Export Value (\$NZ)	Yearly Export Price (\$NZ/kg)
Mar-06	1,643,038	\$19,039,146	\$11.59			
Jun-06	1,717,340	\$24,014,690	\$13.98			
Sep-06	2,418,954	\$24,915,312	\$10.30			
Dec-06	1,482,155	\$15,946,646	\$10.76			
Mar-07	1,237,066	\$12,256,397	\$9.91	6,517,167	\$59,178,061	\$9.08
Jun-07	1,979,300	\$16,870,787	\$8.52			
Sep-07	1,818,646	\$14,104,231	\$7.76			
Dec-07	1,846,439	\$14,214,567	\$7.70			
Mar-08	1,695,032	\$15,401,965	\$9.09	6,679,714	\$62,510,901	\$9.36
Jun-08	1,446,392	\$16,007,889	\$11.07			
Sep-08	1,691,851	\$16,886,480	\$9.98			
Dec-08	1,025,890	\$12,521,389	\$12.21			
Mar-09	940,674	\$11,841,117	\$12.59	4,044,601	\$49,615,258	\$12.27
Jun-09	831,195	\$10,493,772	\$12.62			
Sep-09	1,246,842	\$14,758,980	\$11.84			
Dec-09	1,074,748	\$13,935,714	\$12.97			
Mar-10	627,545	\$8,791,205	\$14.01	3,515,407	\$49,182,633	\$13.99
Jun-10	746,349	\$11,786,049	\$15.79			
Sep-10	1,066,765	\$14,669,665	\$13.75			

Source: Statistics New Zealand and New Zealand Seafood Industry Council



Table 9d: Southern Blue Whiting

Date	Quarterly Export Volume (kgs)	Quarterly Export Value (\$NZ)	Quarterly Export Price (\$NZ/kg)	Yearly Export Volume (kgs)	Yearly Export Value (\$NZ)	Yearly Export Price (\$NZ/kg)
Mar-06	1,326,636	\$1,785,962	\$1.35			
Jun-06	917,040	\$1,414,455	\$1.54			
Sep-06	1,280,209	\$3,129,470	\$2.44			
Dec-06	5,844,734	\$12,463,199	\$2.13			
Mar-07	1,431,459	\$1,299,639	\$0.91	9,173,355	\$15,402,062	\$1.68
Jun-07	1,343,462	\$1,306,082	\$0.97			
Sep-07	553,700	\$333,142	\$0.60			
Dec-07	5,158,587	\$9,659,210	\$1.87			
Mar-08	1,024,602	\$1,100,551	\$1.07	10,972,525	\$18,808,648	\$1.71
Jun-08	1,815,982	\$1,303,458	\$0.72			
Sep-08	2,973,354	\$6,745,429	\$2.27			
Dec-08	4,809,236	\$13,542,335	\$2.82			
Mar-09	3,432,671	\$5,184,463	\$1.51	14,337,280	\$28,912,719	\$2.02
Jun-09	1,672,044	\$2,606,967	\$1.56			
Sep-09	4,423,329	\$7,578,954	\$1.71			
Dec-09	10,510,710	\$19,679,326	\$1.87			
Mar-10	2,394,995	\$2,775,541	\$1.16	18,728,421	\$31,384,328	\$1.68
Jun-10	1,774,588	\$2,291,714	\$1.29			
Sep-10	4,048,128	\$6,637,747	\$1.64			

Source: Statistics New Zealand and New Zealand Seafood Industry Council

Table 9e: Scampi

Date	Quarterly Export Volume (kgs)	Quarterly Export Value (\$NZ)	Quarterly Export Price (\$NZ/kg)	Yearly Export Volume (kgs)	Yearly Export Value (\$NZ)	Yearly Export Price (\$NZ/kg)
Mar-06	175,554	\$4,827,796	\$27.50			
Jun-06	107,192	\$2,703,893	\$25.22			
Sep-06	156,812	\$4,807,171	\$30.66			
Dec-06	27,352	\$268,874	\$9.83			
Mar-07	18,000	\$282,997	\$15.72	155,719	\$1,820,591	\$11.69
Jun-07	96,364	\$1,094,629	\$11.36			
Sep-07	14,003	\$174,091	\$12.43			
Dec-07	30,685	\$371,387	\$12.10			
Mar-08	60,926	\$922,716	\$15.14	282,870	\$6,684,926	\$23.63
Jun-08	19,675	\$233,729	\$11.88			
Sep-08	171,584	\$5,157,094	\$30.06			
Dec-08	185,657	\$5,504,440	\$29.65			
Mar-09	119,875	\$4,602,226	\$38.39	541,377	\$17,957,636	\$33.17
Jun-09	112,318	\$4,107,522	\$36.57			
Sep-09	123,527	\$3,743,448	\$30.30			
Dec-09	199,384	\$6,240,806	\$31.30			
Mar-10	142,228	\$3,146,591	\$22.12	637,442	\$17,918,033	\$28.11
Jun-10	103,136	\$2,835,491	\$27.49			
Sep-10	192,694	\$5,695,145	\$29.56			

Source: Statistics New Zealand and New Zealand Seafood Industry Council

Table 9f: Hake

Date	Quarterly Export Volume (kgs)	Quarterly Export Value (\$NZ)	Quarterly Export Price (\$NZ/kg)	Yearly Export Volume (kgs)	Yearly Export Value (\$NZ)	Yearly Export Price (\$NZ/kg)
Mar-06	1,118,406	\$6,863,090	\$6.14			
Jun-06	738,602	\$4,594,133	\$6.22			
Sep-06	2,212,642	\$16,135,939	\$7.29			
Dec-06	2,190,271	\$14,078,663	\$6.43			
Mar-07	938,000	\$5,578,238	\$5.95	7,761,384	\$47,485,221	\$6.12
Jun-07	247,737	\$1,500,405	\$6.06			
Sep-07	4,385,376	\$26,327,915	\$6.00			
Dec-07	1,466,218	\$9,590,609	\$6.54			
Mar-08	1,103,730	\$6,835,348	\$6.19	3,904,264	\$26,817,437	\$6.87
Jun-08	394,220	\$2,565,381	\$6.51			
Sep-08	940,096	\$7,826,099	\$8.32			
Dec-08	1,005,241	\$9,882,688	\$9.83			
Mar-09	1,233,851	\$11,826,371	\$9.58	3,857,599	\$34,651,058	\$8.98
Jun-09	648,099	\$6,035,451	\$9.31			
Sep-09	970,408	\$6,906,548	\$7.12			
Dec-09	1,923,581	\$11,067,611	\$5.75			
Mar-10	426,437	\$2,468,859	\$5.79	4,962,784	\$25,557,142	\$5.15
Jun-10	1,455,878	\$6,847,847	\$4.70			
Sep-10	1,156,888	\$5,172,825	\$4.47			

Source: Statistics New Zealand and New Zealand Seafood Industry Council

Table 9g: Ling

Date	Quarterly Export Volume (kgs)	Quarterly Export Value (\$NZ)	Quarterly Export Price (\$NZ/kg)	Yearly Export Volume (kgs)	Yearly Export Value (\$NZ)	Yearly Export Price (\$NZ/kg)
Mar-06	1,161,439	\$6,857,154	\$5.90			
Jun-06	640,696	\$4,997,459	\$7.80			
Sep-06	1,646,521	\$13,245,870	\$8.04			
Dec-06	3,412,129	\$25,907,902	\$7.59			
Mar-07	1,533,576	\$11,425,744	\$7.45	7,130,886	\$55,974,170	\$7.85
Jun-07	660,518	\$5,811,430	\$8.80			
Sep-07	1,524,663	\$12,829,094	\$8.41			
Dec-07	2,845,793	\$23,967,603	\$8.42			
Mar-08	1,742,735	\$13,243,495	\$7.60	7,173,266	\$56,600,509	\$7.89
Jun-08	1,223,514	\$9,480,320	\$7.75			
Sep-08	1,361,224	\$9,909,091	\$7.28			
Dec-08	1,101,691	\$7,911,153	\$7.18			
Mar-09	1,536,340	\$11,308,325	\$7.36	6,135,254	\$41,184,720	\$6.71
Jun-09	1,809,136	\$11,471,134	\$6.34			
Sep-09	1,688,087	\$10,494,108	\$6.22			
Dec-09	1,496,147	\$8,578,778	\$5.73			
Mar-10	1,635,699	\$10,380,962	\$6.35	5,513,578	\$37,230,744	\$6.75
Jun-10	1,043,411	\$7,944,854	\$7.61			
Sep-10	1,338,321	\$10,326,150	\$7.72			

Source: Statistics New Zealand and New Zealand Seafood Industry Council

Table 10: Inshore Shellfish

Date	Quarterly Export Volume (kgs)	Quarterly Export Value (\$NZ)	Quarterly Export Price (\$NZ/kg)	Yearly Export Volume (kgs)	Yearly Export Value (\$NZ)	Yearly Export Price (\$NZ/kg)
Mar-06	539,367	\$28,442,756	\$52.73			
Jun-06	617,529	\$37,770,498	\$61.16			
Sep-06	1,049,478	\$60,905,738	\$58.03			
Dec-06	966,980	\$54,208,163	\$56.06			
Mar-07	651,250	\$36,649,400	\$56.28	3,116,658	\$179,945,017	\$57.74
Jun-07	581,214	\$34,704,602	\$59.71			
Sep-07	917,214	\$54,382,852	\$59.29			
Dec-07	1,006,681	\$54,776,845	\$54.41			
Mar-08	588,882	\$35,420,846	\$60.15	3,383,404	\$211,980,897	\$62.65
Jun-08	665,405	\$43,735,647	\$65.73			
Sep-08	1,122,436	\$78,047,559	\$69.53			
Dec-08	919,695	\$68,608,595	\$74.60			
Mar-09	566,263	\$47,775,689	\$84.37	3,189,305	\$240,600,826	\$75.44
Jun-09	604,354	\$48,630,720	\$80.47			
Sep-09	1,098,993	\$75,585,822	\$68.78			
Dec-09	1,061,665	\$60,173,332	\$56.68			
Mar-10	814,098	\$55,646,546	\$68.35	3,853,339	\$273,643,726	\$71.01
Jun-10	806,475	\$64,401,647	\$79.86			
Sep-10	1,171,101	\$93,422,201	\$79.77			

Source: Statistics New Zealand and New Zealand Seafood Industry Council

Table 10a: Rock Lobster

Date	Quarterly Export Volume (kgs)	Quarterly Export Value (\$NZ)	Quarterly Export Price (\$NZ/kg)	Yearly Export Volume (kgs)	Yearly Export Value (\$NZ)	Yearly Export Price (\$NZ/kg)
Mar-06	418,705	\$19,610,573	\$46.84			
Jun-06	491,729	\$28,524,605	\$58.01			
Sep-06	915,416	\$50,812,617	\$55.51			
Dec-06	585,772	\$28,098,833	\$47.97			
Mar-07	439,594	\$21,789,130	\$49.57	2,312,827	\$124,458,459	\$53.81
Jun-07	474,068	\$27,404,057	\$57.81			
Sep-07	813,393	\$47,166,439	\$57.99			
Dec-07	537,324	\$25,544,260	\$47.54			
Mar-08	474,631	\$27,745,922	\$58.46	2,617,234	\$161,784,335	\$61.82
Jun-08	577,567	\$37,171,377	\$64.36			
Sep-08	1,027,712	\$71,322,776	\$69.40			
Dec-08	558,602	\$43,280,653	\$77.48			
Mar-09	403,643	\$37,058,752	\$91.81	2,412,837	\$189,479,598	\$78.53
Jun-09	503,224	\$41,549,618	\$82.57			
Sep-09	947,368	\$67,590,575	\$71.35			
Dec-09	592,384	\$38,032,434	\$64.20			
Mar-10	580,997	\$43,021,261	\$74.05	2,795,476	\$218,945,354	\$78.32
Jun-10	694,378	\$57,461,714	\$82.75			
Sep-10	927,717	\$80,429,945	\$86.70			

Source: Statistics New Zealand and New Zealand Seafood Industry Council

Table 10b: Paua

Date	Quarterly Export Volume (kgs)	Quarterly Export Value (\$NZ)	Quarterly Export Price (\$NZ/kg)	Yearly Export Volume (kgs)	Yearly Export Value (\$NZ)	Yearly Export Price (\$NZ/kg)
Mar-06	120,662	\$8,832,183	\$73.20			
Jun-06	125,800	\$9,245,893	\$73.50			
Sep-06	134,062	\$10,093,121	\$75.29			
Dec-06	381,208	\$26,109,330	\$68.49			
Mar-07	211,656	\$14,860,270	\$70.21	803,831	\$55,486,558	\$69.03
Jun-07	107,146	\$7,300,545	\$68.14			
Sep-07	103,821	\$7,216,413	\$69.51			
Dec-07	469,357	\$29,232,585	\$62.28			
Mar-08	114,251	\$7,674,924	\$67.18	766,170	\$50,196,562	\$65.52
Jun-08	87,838	\$6,564,270	\$74.73			
Sep-08	94,724	\$6,724,783	\$70.99			
Dec-08	361,093	\$25,327,942	\$70.14			
Mar-09	162,620	\$10,716,937	\$65.90	776,468	\$51,121,228	\$65.84
Jun-09	101,130	\$7,081,102	\$70.02			
Sep-09	151,625	\$7,995,247	\$52.73			
Dec-09	469,281	\$22,140,898	\$47.18			
Mar-10	233,101	\$12,625,285	\$54.16	1,057,863	\$54,698,372	\$51.71
Jun-10	112,097	\$6,939,933	\$61.91			
Sep-10	243,384	\$12,992,256	\$53.38			

Source: Statistics New Zealand and New Zealand Seafood Industry Council

Table 11: Aquaculture

Date	Quarterly Export Volume (kgs)	Quarterly Export Value (\$NZ)	Quarterly Export Price (\$NZ/kg)	Yearly Export Volume (kgs)	Yearly Export Value (\$NZ)	Yearly Export Price (\$NZ/kg)
Mar-06	9,725,569	\$52,361,369	\$5.38			
Jun-06	12,132,959	\$68,182,906	\$5.62			
Sep-06	8,756,901	\$54,844,734	\$6.26			
Dec-06	11,695,373	\$66,873,851	\$5.72			
Mar-07	11,282,782	\$59,620,827	\$5.28	44,236,618	\$238,375,080	\$5.39
Jun-07	12,114,380	\$62,129,016	\$5.13			
Sep-07	9,144,083	\$49,751,386	\$5.44			
Dec-07	9,758,608	\$57,766,659	\$5.92			
Mar-08	9,069,557	\$50,330,085	\$5.55	38,543,899	\$240,199,578	\$6.23
Jun-08	11,840,137	\$71,527,841	\$6.04			
Sep-08	7,875,597	\$60,574,993	\$7.69			
Dec-08	9,305,608	\$82,350,200	\$8.85			
Mar-09	9,879,705	\$81,848,482	\$8.28	40,132,263	\$302,557,513	\$7.54
Jun-09	11,689,747	\$79,869,566	\$6.83			
Sep-09	9,257,203	\$58,489,265	\$6.32			
Dec-09	10,187,857	\$59,183,407	\$5.81			
Mar-10	10,105,228	\$58,624,448	\$5.80	41,493,874	\$252,415,296	\$6.08
Jun-10	12,120,816	\$74,451,452	\$6.14			
Sep-10	9,079,973	\$60,155,989	\$6.63			

Source: Statistics New Zealand and New Zealand Seafood Industry Council

Table 11a: Green Lipped Mussels

Date	Quarterly Export Volume (kgs)	Quarterly Export Value (\$NZ)	Quarterly Export Price (\$NZ/kg)	Yearly Export Volume (kgs)	Yearly Export Value (\$NZ)	Yearly Export Price (\$NZ/kg)
Mar-06	8,360,485	\$41,859,116	\$5.01			
Jun-06	10,733,706	\$56,378,333	\$5.25			
Sep-06	6,632,586	\$36,446,822	\$5.50			
Dec-06	9,415,942	\$47,021,819	\$4.99			
Mar-07	10,319,359	\$50,318,382	\$4.88	38,548,601	\$186,537,261	\$4.84
Jun-07	10,990,834	\$52,224,770	\$4.75			
Sep-07	7,822,466	\$36,972,290	\$4.73			
Dec-07	7,733,872	\$37,556,917	\$4.86			
Mar-08	8,020,277	\$38,772,352	\$4.83	32,879,481	\$179,690,383	\$5.47
Jun-08	10,762,456	\$60,134,499	\$5.59			
Sep-08	6,362,876	\$43,226,615	\$6.79			
Dec-08	7,579,101	\$61,330,673	\$8.09			
Mar-09	8,708,801	\$66,196,183	\$7.60	33,251,000	\$224,583,000	\$6.75
Jun-09	9,629,122	\$57,862,779	\$6.01			
Sep-09	7,333,976	\$39,193,365	\$5.34			
Dec-09	8,170,927	\$39,215,840	\$4.80			
Mar-10	8,348,062	\$39,628,126	\$4.75	32,770,444	\$158,820,869	\$4.85
Jun-10	9,288,656	\$44,536,565	\$4.79			
Sep-10	6,962,799	\$35,440,338	\$5.09			

Source: Statistics New Zealand and New Zealand Seafood Industry Council

Table 11b: Oysters

Date	Quarterly Export Volume (kgs)	Quarterly Export Value (\$NZ)	Quarterly Export Price (\$NZ/kg)	Yearly Export Volume (kgs)	Yearly Export Value (\$NZ)	Yearly Export Price (\$NZ/kg)
Mar-06	305,078	\$2,320,372	\$7.61			
Jun-06	309,206	\$2,323,299	\$7.51			
Sep-06	924,132	\$6,251,464	\$6.76			
Dec-06	1,046,562	\$7,124,242	\$6.81			
Mar-07	275,911	\$1,809,791	\$6.56	2,277,314	\$15,333,329	\$6.73
Jun-07	374,538	\$2,271,062	\$6.06			
Sep-07	580,303	\$4,128,234	\$7.11			
Dec-07	957,075	\$8,072,080	\$8.43			
Mar-08	199,546	\$1,743,396	\$8.74	2,005,889	\$17,855,517	\$8.90
Jun-08	254,126	\$2,177,968	\$8.57			
Sep-08	595,142	\$5,862,073	\$9.85			
Dec-08	822,884	\$7,065,548	\$8.59			
Mar-09	228,519	\$1,918,470	\$8.40	2,020,653	\$16,382,805	\$8.11
Jun-09	408,928	\$3,145,315	\$7.69			
Sep-09	560,322	\$4,253,472	\$7.59			
Dec-09	892,773	\$6,824,614	\$7.64			
Mar-10	373,848	\$2,925,557	\$7.83	2,316,042	\$17,694,372	\$7.64
Jun-10	506,331	\$3,740,154	\$7.39			
Sep-10	543,090	\$4,204,047	\$7.74			

Source: Statistics New Zealand and New Zealand Seafood Industry Council

Table 11c: Salmon

Date	Quarterly Export Volume (kgs)	Quarterly Export Value (\$NZ)	Quarterly Export Price (\$NZ/kg)	Yearly Export Volume (kgs)	Yearly Export Value (\$NZ)	Yearly Export Price (\$NZ/kg)
Mar-06	1,060,006	\$8,181,881	\$7.72			
Jun-06	1,090,047	\$9,481,274	\$8.70			
Sep-06	1,200,183	\$12,146,448	\$10.12			
Dec-06	1,232,869	\$12,727,790	\$10.32			
Mar-07	687,512	\$7,492,654	\$10.90	3,410,703	\$36,504,490	\$10.70
Jun-07	749,008	\$7,633,184	\$10.19			
Sep-07	741,314	\$8,650,862	\$11.67			
Dec-07	1,067,661	\$12,137,662	\$11.37			
Mar-08	849,734	\$9,814,337	\$11.55	3,658,529	\$42,653,678	\$11.66
Jun-08	823,555	\$9,215,374	\$11.19			
Sep-08	917,579	\$11,486,305	\$12.52			
Dec-08	903,623	\$13,953,979	\$15.44			
Mar-09	942,385	\$13,733,829	\$14.57	4,860,610	\$61,591,708	\$12.67
Jun-09	1,651,697	\$18,861,472	\$11.42			
Sep-09	1,362,905	\$15,042,428	\$11.04			
Dec-09	1,124,157	\$13,142,953	\$11.69			
Mar-10	1,383,318	\$16,070,765	\$11.62	6,407,438	\$75,900,430	\$11.85
Jun-10	2,325,879	\$26,175,108	\$11.25			
Sep-10	1,574,084	\$20,511,604	\$13.03			

Source: Statistics New Zealand and New Zealand Seafood Industry Council

Table 12: Pelagic

Date	Quarterly Export Volume (kgs)	Quarterly Export Value (\$NZ)	Quarterly Export Price (\$NZ/kg)	Yearly Export Volume (kgs)	Yearly Export Value (\$NZ)	Yearly Export Price (\$NZ/kg)
Mar-06	46,634,814	\$77,880,591	\$1.67			
Jun-06	38,876,242	\$73,106,567	\$1.88			
Sep-06	18,840,343	\$38,075,069	\$2.02			
Dec-06	15,447,658	\$24,239,266	\$1.57			
Mar-07	35,397,623	\$54,000,187	\$1.53	118,598,392	\$185,709,601	\$1.57
Jun-07	42,953,119	\$65,302,126	\$1.52			
Sep-07	24,799,992	\$42,168,022	\$1.70			
Dec-07	19,252,304	\$27,224,994	\$1.41			
Mar-08	44,144,575	\$65,019,561	\$1.47	122,654,481	\$195,762,442	\$1.60
Jun-08	41,751,177	\$69,200,939	\$1.66			
Sep-08	17,506,425	\$34,316,948	\$1.96			
Dec-08	16,056,648	\$34,177,795	\$2.13			
Mar-09	25,829,097	\$55,103,681	\$2.13	96,661,035	\$205,854,943	\$2.13
Jun-09	34,763,486	\$71,824,966	\$2.07			
Sep-09	20,011,804	\$44,748,501	\$2.24			
Dec-09	18,509,663	\$27,023,161	\$1.46			
Mar-10	29,986,444	\$50,902,194	\$1.70	100,872,625	\$207,873,751	\$2.06
Jun-10	32,622,060	\$82,411,739	\$2.53			
Sep-10	19,754,458	\$47,536,657	\$2.41			

Source: Statistics New Zealand and New Zealand Seafood Industry Council

Table 12a: Squid

Date	Quarterly Export Volume (kgs)	Quarterly Export Value (\$NZ)	Quarterly Export Price (\$NZ/kg)	Yearly Export Volume (kgs)	Yearly Export Value (\$NZ)	Yearly Export Price (\$NZ/kg)
Mar-06	24,782,128	\$48,088,332	\$1.94			
Jun-06	24,520,887	\$51,199,365	\$2.09			
Sep-06	4,744,382	\$11,060,231	\$2.33			
Dec-06	2,794,210	\$7,696,882	\$2.75			
Mar-07	12,350,846	\$21,094,936	\$1.71	56,391,392	\$85,658,005	\$1.52
Jun-07	28,886,764	\$41,232,204	\$1.43			
Sep-07	12,359,572	\$15,633,983	\$1.26			
Dec-07	3,539,906	\$7,597,303	\$2.15			
Mar-08	13,336,734	\$17,270,085	\$1.29	48,112,412	\$73,156,824	\$1.52
Jun-08	26,803,929	\$38,542,746	\$1.44			
Sep-08	4,431,843	\$9,746,690	\$2.20			
Dec-08	1,867,366	\$5,519,723	\$2.96			
Mar-09	4,935,585	\$9,242,417	\$1.87	38,394,431	\$76,604,212	\$2.00
Jun-09	25,014,178	\$46,948,605	\$1.88			
Sep-09	6,577,302	\$14,893,467	\$2.26			
Dec-09	1,365,685	\$4,225,850	\$3.09			
Mar-10	4,867,889	\$11,168,169	\$2.29	29,143,993	\$86,136,797	\$2.96
Jun-10	15,992,257	\$46,224,918	\$2.89			
Sep-10	6,918,162	\$24,517,860	\$3.54			

Source: Statistics New Zealand and New Zealand Seafood Industry Council

Table 12b: Jack Mackerel

Date	Quarterly Export Volume (kgs)	Quarterly Export Value (\$NZ)	Quarterly Export Price (\$NZ/kg)	Yearly Export Volume (kgs)	Yearly Export Value (\$NZ)	Yearly Export Price (\$NZ/kg)
Mar-06	9,117,653	\$11,231,010	\$1.23			
Jun-06	4,834,622	\$6,495,961	\$1.34			
Sep-06	8,520,053	\$11,646,302	\$1.37			
Dec-06	5,275,579	\$6,303,537	\$1.19			
Mar-07	7,863,944	\$11,359,970	\$1.44	22,340,604	\$30,028,066	\$1.34
Jun-07	4,108,697	\$5,797,160	\$1.41			
Sep-07	5,092,384	\$6,567,399	\$1.29			
Dec-07	8,133,938	\$8,812,803	\$1.08			
Mar-08	11,240,152	\$13,918,817	\$1.24	31,570,783	\$40,947,093	\$1.30
Jun-08	5,450,859	\$6,878,842	\$1.26			
Sep-08	6,745,834	\$11,336,631	\$1.68			
Dec-08	9,646,867	\$19,204,609	\$1.99			
Mar-09	8,941,545	\$18,565,412	\$2.08	29,121,879	\$54,869,662	\$1.88
Jun-09	4,185,725	\$6,719,179	\$1.61			
Sep-09	6,347,742	\$10,380,462	\$1.64			
Dec-09	8,176,883	\$10,263,379	\$1.26			
Mar-10	10,003,700	\$15,189,144	\$1.52	30,813,095	\$43,936,495	\$1.43
Jun-10	5,913,011	\$8,547,166	\$1.45			
Sep-10	6,719,501	\$9,936,806	\$1.48			

Source: Statistics New Zealand and New Zealand Seafood Industry Council

Table 12c: Blue Mackerel

Date	Quarterly Export Volume (kgs)	Quarterly Export Value (\$NZ)	Quarterly Export Price (\$NZ/kg)	Yearly Export Volume (kgs)	Yearly Export Value (\$NZ)	Yearly Export Price (\$NZ/kg)
Mar-06	1,456,243	\$1,561,126	\$1.07			
Jun-06	763,638	\$1,100,069	\$1.44			
Sep-06	2,114,785	\$4,317,035	\$2.04			
Dec-06	3,614,202	\$5,217,985	\$1.44			
Mar-07	2,181,990	\$2,823,371	\$1.29	7,858,021	\$11,511,318	\$1.46
Jun-07	548,277	\$829,920	\$1.51			
Sep-07	1,513,552	\$2,640,042	\$1.74			
Dec-07	3,186,931	\$3,827,906	\$1.20			
Mar-08	3,474,034	\$4,145,398	\$1.19	9,927,456	\$12,830,259	\$1.29
Jun-08	1,626,659	\$1,903,404	\$1.17			
Sep-08	1,639,832	\$2,953,551	\$1.80			
Dec-08	1,274,531	\$1,850,211	\$1.45			
Mar-09	1,300,948	\$2,424,564	\$1.86	5,103,905	\$8,928,518	\$1.75
Jun-09	341,991	\$677,810	\$1.98			
Sep-09	2,186,435	\$3,975,933	\$1.82			
Dec-09	4,160,922	\$4,928,260	\$1.18			
Mar-10	3,446,083	\$4,084,621	\$1.19	12,073,649	\$15,713,950	\$1.30
Jun-10	2,451,011	\$3,063,357	\$1.25			
Sep-10	2,015,633	\$3,637,712	\$1.80			

Source: Statistics New Zealand and New Zealand Seafood Industry Council

Table 12d: Barracouta

Date	Quarterly Export Volume (kgs)	Quarterly Export Value (\$NZ)	Quarterly Export Price (\$NZ/kg)	Yearly Export Volume (kgs)	Yearly Export Value (\$NZ)	Yearly Export Price (\$NZ/kg)
Mar-06	4,528,248	\$5,061,770	\$1.12			
Jun-06	5,275,120	\$6,005,914	\$1.14			
Sep-06	2,909,369	\$3,458,273	\$1.19			
Dec-06	3,679,971	\$4,446,575	\$1.21			
Mar-07	3,797,266	\$4,754,063	\$1.25	17,896,870	\$22,520,071	\$1.26
Jun-07	5,480,742	\$7,216,692	\$1.32			
Sep-07	4,938,891	\$6,102,741	\$1.24			
Dec-07	3,698,516	\$5,001,042	\$1.35			
Mar-08	4,956,776	\$6,761,989	\$1.36	17,311,056	\$26,920,449	\$1.56
Jun-08	4,524,472	\$7,752,644	\$1.71			
Sep-08	4,131,292	\$7,404,774	\$1.79			
Dec-08	3,176,308	\$6,792,004	\$2.14			
Mar-09	5,082,698	\$8,892,144	\$1.75	16,710,351	\$28,896,125	\$1.73
Jun-09	4,121,944	\$6,787,415	\$1.65			
Sep-09	4,329,401	\$6,424,562	\$1.48			
Dec-09	3,768,463	\$5,440,922	\$1.44			
Mar-10	5,666,880	\$8,546,360	\$1.51	17,971,267	\$25,743,149	\$1.43
Jun-10	4,752,895	\$6,832,181	\$1.44			
Sep-10	3,783,029	\$4,923,686	\$1.30			

Source: Statistics New Zealand and New Zealand Seafood Industry Council



Table 12e: Tunas

Date	Quarterly Export Volume (kgs)	Quarterly Export Value (\$NZ)	Quarterly Export Price (\$NZ/kg)	Yearly Export Volume (kgs)	Yearly Export Value (\$NZ)	Yearly Export Price (\$NZ/kg)
Mar-06	6,750,542	\$11,938,353	\$1.77			
Jun-06	3,481,975	\$8,305,258	\$2.39			
Sep-06	551,754	\$7,593,228	\$13.76			
Dec-06	83,696	\$574,287	\$6.86			
Mar-07	8,712,318	\$12,874,079	\$1.48	13,082,713	\$32,552,598	\$2.49
Jun-07	3,620,749	\$8,855,570	\$2.45			
Sep-07	665,950	\$10,248,662	\$15.39			
Dec-07	453,995	\$1,298,692	\$2.86			
Mar-08	10,851,341	\$22,052,259	\$2.03	14,736,523	\$38,842,457	\$2.64
Jun-08	3,013,137	\$13,164,400	\$4.37			
Sep-08	418,050	\$2,327,106	\$5.57			
Dec-08	81,818	\$756,533	\$9.25			
Mar-09	5,508,286	\$15,253,303	\$2.77	7,139,811	\$34,129,718	\$4.78
Jun-09	1,010,857	\$9,472,615	\$9.37			
Sep-09	538,850	\$8,647,267	\$16.05			
Dec-09	1,026,971	\$2,042,362	\$1.99			
Mar-10	5,932,955	\$11,137,598	\$1.88	10,665,682	\$33,799,347	\$3.17
Jun-10	3,411,068	\$16,439,781	\$4.82			
Sep-10	294,688	\$4,179,606	\$14.18			

Source: Statistics New Zealand and New Zealand Seafood Industry Council