

## **South Island east coast**

**The interim relief decision permits the following exceptions to the set net prohibition on the South Island east coast:**

Set netting by commercial fishers in the inshore waters of the Marlborough Sounds lying within 200 meters from the mean high-water mark that extends:

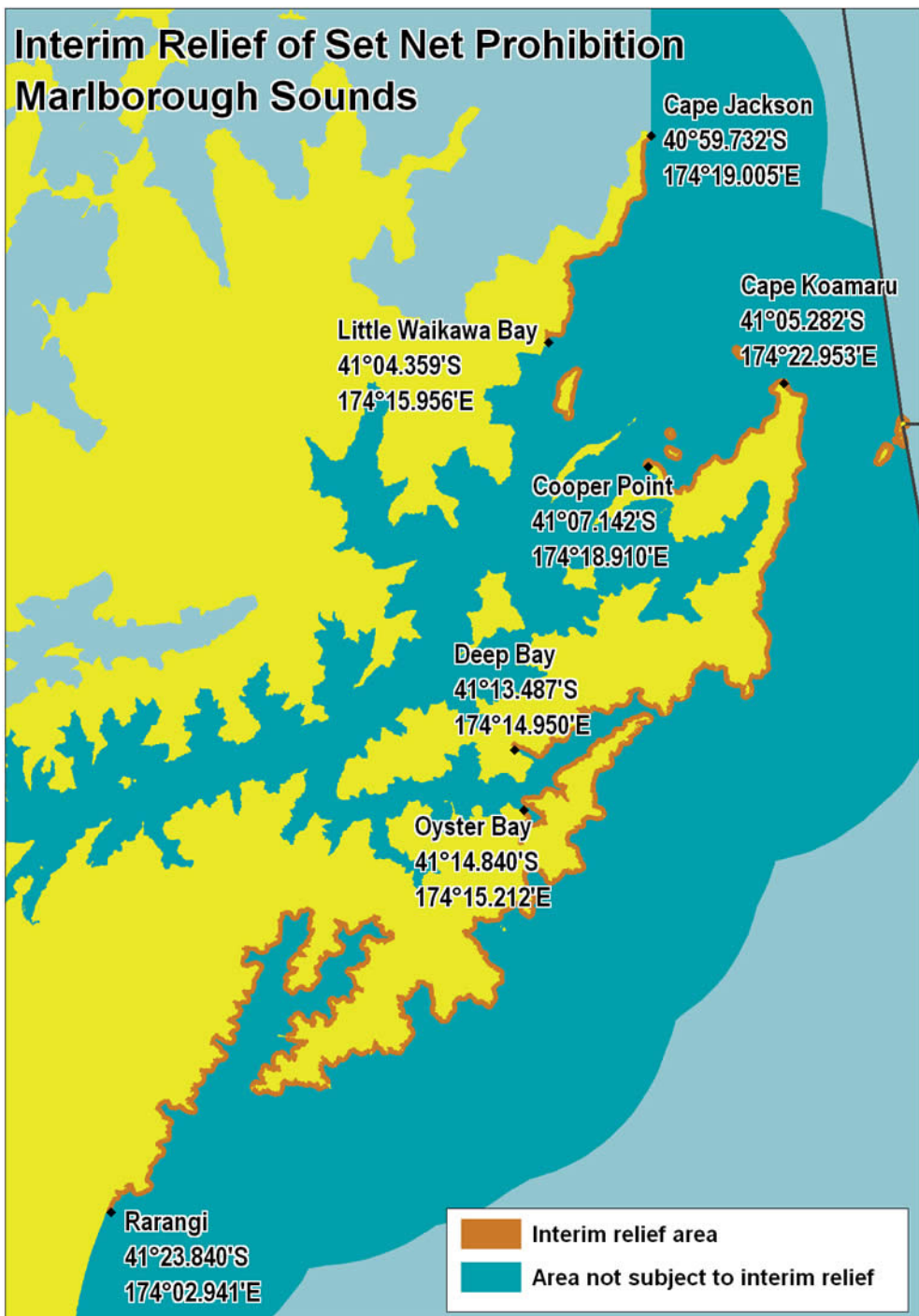
- a) from Cape Jackson to Little Waikawa Bay;
- b) around Motuara, Motungarara, the Brothers and Cooper Islands, White Rocks and Twin Rocks;
- c) from Cooper Point to Cape Kamaru to Deep Bay, being a point on the north bank of the Tory Channel;
- d) from Oyster Bay, being a point on the south bank of the Tory Channel to Robertson Point and round the coastline of Port Underwood and down to Rarangi; and
- e) from Cape Campbell to Needles Point.

**Provided** that such commercial fishers use:

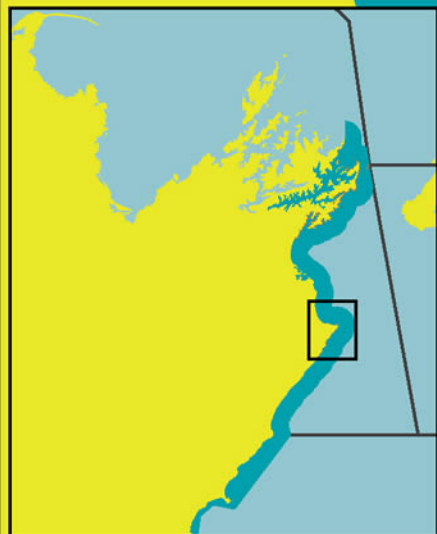
- such set nets to target butterfish only;
- stay continuously in the vicinity of their set nets while they are set; and

set and haul their set nets during the period commencing half an hour before sunrise and ending half an hour after sundown.

# Interim Relief of Set Net Prohibition Marlborough Sounds





# Interim Relief of Set Net Prohibition Cape Campbell (South Island East Coast)



Cape Campbell  
41°43.561'S  
174°16.499'E

Needles Point  
41°52.447'S  
174°09.886'E

-  Interim relief area
-  Area not subject to interim relief

These maps are intended to be used as a guide only, in conjunction with other data sources and methods, and should only be used for the purpose for which they were developed. Although the information on these maps have been prepared with care and in good faith, no guarantee is given that the information is complete, accurate or up-to-date.

The coordinates used to create the maps in this document were provided by the Seafood Industry Council.