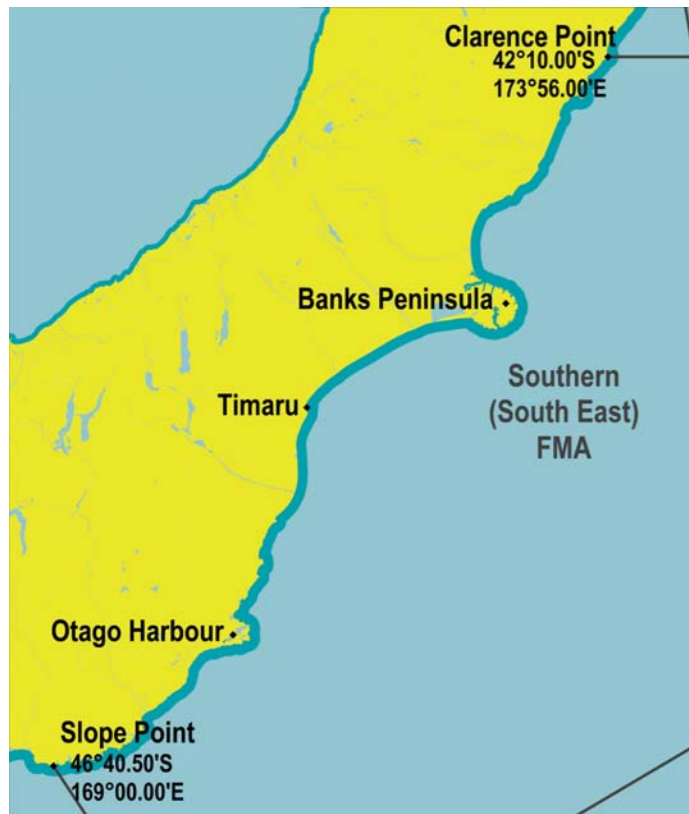


**SOUTHERN (SOUTH-EAST) FISHERY MANAGEMENT AREA**  
Set net prohibition maps



Set net prohibition in the Southern (South-East) Fishery Management Area.



Banks Peninsula set net prohibition and flatfish exemption 1 April to 30 September.



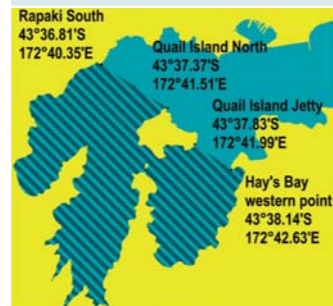
Set net prohibition in Timaru Harbour.



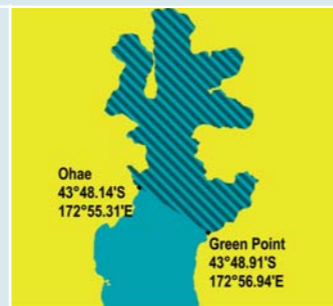
Inner Port Levy and inner Pigeon Bay set net prohibition and flatfish exemption 1 April to 30 September.



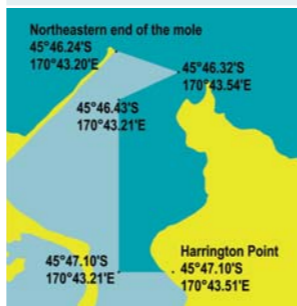
Set net prohibition at the Otago Peninsula.



Inner Lyttelton Harbour set net prohibition and flatfish exemption 1 April to 30 September.



Inner Akaroa Harbour set net prohibition and flatfish exemption 1 April to 30 September.



Set net prohibition in the Otago Harbour entrance.

- Set Net Ban Area
- Flatfish Area

You must check for set net prohibitions and restrictions in the area where you plan to fish – *before* you go fishing.

**Penalties apply**

Penalties apply for breaching the prohibitions to protect Hector's and Maui's dolphins. These include fines of up to \$20,000 and forfeiture of vessels and fishing gear.



PHOTO COURTESY OF DOC

Ministry of Fisheries Regional Offices

Nelson	Christchurch	Invercargill
03 548 1069	03 339 3662	03 211 0060
Blenheim	Dunedin	
03 579 1088	03 474 0333	

Report illegal fishing

**call 0800 4 POACHER**  
(0800 476 224)

For more information on fishing rules call your nearest Ministry of Fisheries office or go to: [fish.govt.nz](http://fish.govt.nz)



# Recreational set net prohibitions for Hector's dolphins

**South Island – east and south coasts**  
(including areas in the Challenger, Southern (South-East), and Southern (Southland) Fishery Management Areas)  
**FROM 1 OCTOBER 2008**



HECTOR'S DOLPHIN, TE WAEWAE BAY, SOUTHLAND | PHOTO COURTESY OF DOC

New Zealand Government

Hector's dolphins are among the world's rarest dolphins. The species is found only in New Zealand waters. The Department of Conservation classifies the South Island Hector's dolphin sub-species as "nationally endangered".

Fishing is the greatest-known threat to Hector's dolphins. They can become entangled in set nets and drown.

From 1 October 2008 there will be a new prohibition on set nets in the South Island between Cape Jackson in the Marlborough Sounds and Sand Hill Point east of Fiordland to protect Hector's dolphins. The prohibition replaces earlier measures to protect these dolphins.



PHOTO COURTESY OF DOC |

## New recreational set net prohibition

Set netting is prohibited between Cape Jackson in the Marlborough Sounds and Sand Hill Point east of Fiordland – offshore to four nautical miles.

Set netting is prohibited in the Avon-Heathcote Estuary, in Lyttelton Harbour, Akaroa Harbour and the bays around Banks Peninsula, in Timaru Harbour and in the whole of Te Waewae Bay.

There are other set net prohibitions and restrictions in the Challenger Fishery Management Area, the Southern (South-East) Fishery Management Area, and the Southern (Southland) Fishery Management Area – including a new prohibition to protect Hector's dolphins on the west coast of the South Island offshore to two nautical miles.

**You must check for set net prohibitions and restrictions in the area where you plan to fish – before you go fishing.**

Go to [fish.govt.nz](http://fish.govt.nz) or call your nearest Ministry of Fisheries office.

A set net includes a gill net or other sort of net that acts by enmeshing, entrapping, or entangling fish; but does not include a fyke net or hinaki.

## Flatfish areas

Recreational fishers may use set nets between 1 April and 30 September inclusive in a designated area of inner Queen Charlotte Sound, and around Banks Peninsula in designated areas of inner Lyttelton Harbour, inner Akaroa Harbour, inner Port Levy, and inner Pigeon Bay *providing* the net is no more than 9 meshes deep, the monofilament diameter is no more than 0.35 mm, the mesh size is no less than 100mm, the net is anchored at each end, and does not exceed a total length of 60 metres. Nets must be marked and comply with any other amateur set net regulations.

## Disclosure

This brochure is only a guide to the new set net prohibitions and exemptions in the Fisheries (Southland and Sub-Antarctic Areas Amateur Fishing) Regulations 1986, the Fisheries (South-East Area Amateur Fishing) Regulations 1986, and the Fisheries (Challenger Area Amateur Fishing) Regulations 1986. You can purchase the regulations from most bookshops.

### SOUTH ISLAND EAST AND SOUTH COASTS

Set net prohibition maps



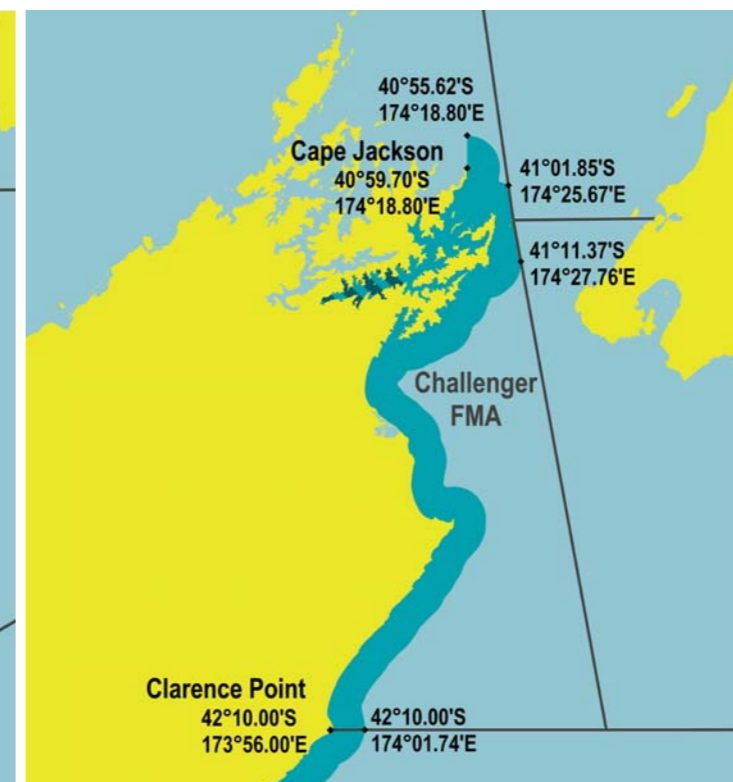
- Set Net Ban Area
- Flatfish Area

### Important

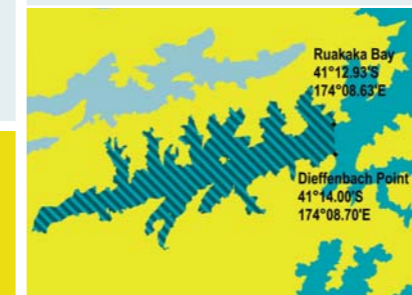
The new prohibitions do not apply to harbours and estuaries (unless specified), nor to rivers, lakes, inlets and lagoons – subject to any other fisheries restrictions, you can use set nets in these areas inside a straight line joining the natural entrance points of the waterway. The regulations define these points in some cases because they are not always clear.

### CHALLENGER FISHERY MANAGEMENT AREA

Set net prohibition maps



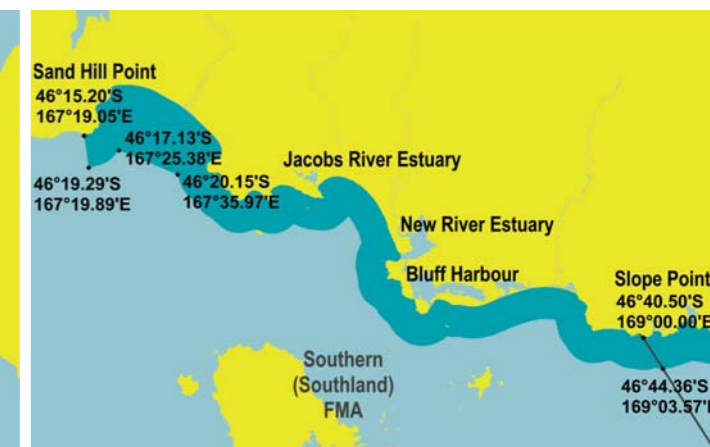
Set net prohibition in the Challenger Fishery Management Area.



Queen Charlotte Sound set net prohibition and flatfish exemption 1 April to 30 September.

### SOUTHERN (SOUTHLAND) FISHERY MANAGEMENT AREA

Set net prohibition maps



Set net prohibition in the Southern (Southland) Fishery Management Area.