



IF YOU CATCH A BLUE COD IN THE CLOSED AREA

- DO:**
- ✓ Only take the fish out of the water if you have to
 - ✓ Wear cotton or rubber gloves or at least wet your hands
 - ✓ Lie fish on a soft wet surface if you need to handle them out of the water
 - ✓ Minimise the time fish are out of the water
 - ✓ Remove the hook carefully from lip hooked fish
 - ✓ Cut the line for gut hooked fish
 - ✓ Return fish gently to the sea
- DON'T:**
- ✗ Hold fish by putting your fingers inside the gill covers
 - ✗ Poke or touch the eyes and never hold a fish by the eye sockets
 - ✗ Use a 'gob stick'
 - ✗ Squeeze the gill covers or gut area
 - ✗ Lift fish by the tail as this can dislocate the spine
 - ✗ Drop or place fish on a hot, dry boat deck or on rocks

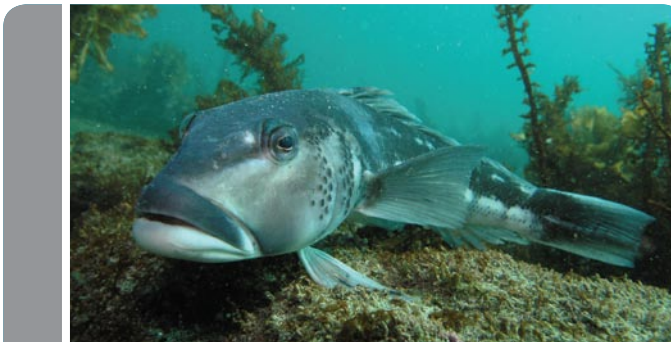
Avoid catching blue cod

The Ministry of Fisheries recognises that fishers will catch blue cod while fishing for other species. It is important that these fish are returned as quickly and safely as possible. Please see the list of Dos and Don'ts for returning fish.

It is possible to minimise the catch of blue cod by moving to a new spot if you start catching them and avoiding blue cod habitat, such as rocky reef areas or areas you know hold blue cod.

Penalties apply

Penalties apply for breaching the closure. These include fines of up to \$20,000 and forfeiture of vessels and fishing gear.



Ministry of Fisheries
Regional Offices

BLENHEIM
(03) 579 1088

NELSON
(03) 548 1069

REPORT ILLEGAL FISHING



CALL 0800 4 POACHER
(0800 476 224)

FOR MORE INFORMATION ON FISHING RULES GO TO
fish.govt.nz



Ministry of
Fisheries
Te Tautiaki i nga tini a Tangaroa

Marlborough Sounds closed to blue cod fishing

No recreational blue cod fishing from
1 October 2008 – 1 October 2012



New Zealand Government

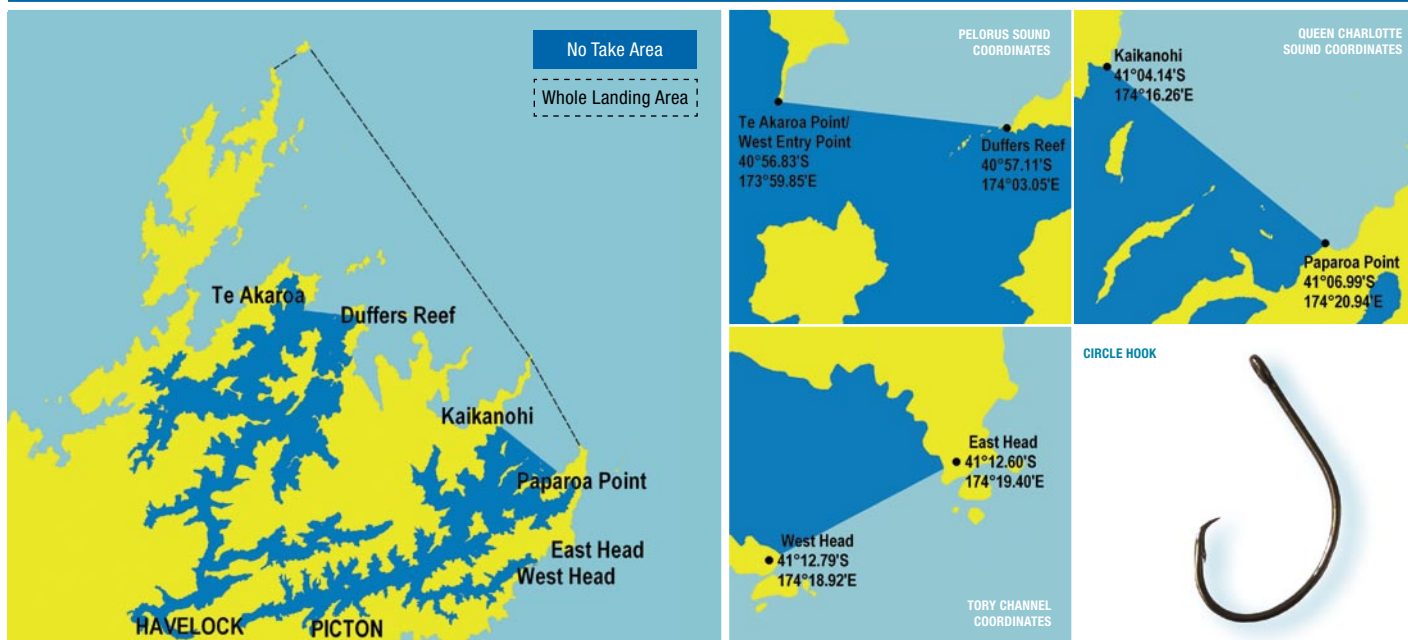
NO RECREATIONAL BLUE COD FISHING

From 1 October 2008 the enclosed waters of the Marlborough Sounds will be closed to all recreational fishing for blue cod.

This closure is to prevent further drops in blue cod numbers, which have seriously declined in most of the enclosed areas of the Marlborough Sounds.

Fishers must ensure they follow the new rules to help blue cod numbers recover for future generations.

BLUE COD CLOSURE



Know the new rules

It is illegal for recreational fishers to take blue cod within the enclosed Marlborough Sounds area from 1 October 2008 until 1 October 2012. This includes all the 'enclosed waters' of Pelorus, Kenepuru and Queen Charlotte Sounds and Tory Channel (see map).

Fishing for other fish species inside the Marlborough Sounds is still allowed but any blue cod caught must be returned to the water immediately.

From 1 October 2008 all blue cod landed within the Marlborough Sounds Area (but taken outside of the closed area) must be landed in a whole or gutted state.

The only exception is for blue cod caught legally that will be used for immediate personal consumption on board the vessel during the trip in which that blue cod was taken. This is provided the fish has been taken outside the closed area and is within the daily bag limit of three blue cod per person per day.

Other fishing rules

There are additional fishing rules that apply in the Marlborough Sounds and surrounding areas that you need to be aware of, including set net prohibitions, marine reserves and reduced bag limits. Please consult the Challenger area recreational fishing regulations brochure, the recreational fisher's handbook or visit www.fish.govt.nz for a comprehensive guide to the fishing rules.

Landing blue cod caught outside the closed area

It is not illegal to land fish caught outside the closed area at a port or boat ramp inside the Marlborough Sounds. To do this you need to be able to prove to a fishery officer that you caught the fish outside the closed area.

Useful information to assist fishery officers includes GPS tracks or chart plotters and digital photographs of blue cod caught with coastal landmarks in view.

Choose the right hook

You can help make sure that fish you accidentally catch, like blue cod in the closed area or other fish that are undersize, are in good condition and likely to survive by making sure you choose the right hook.

Circle or wide gap hooks help to make sure that fish you catch are hooked in the lip rather than through the roof of the fish's mouth. This helps to make sure that hook damage is minimised and the fish is more likely to survive being released.

Barbless hooks help prevent hook damage. You can easily crimp the barbs on ordinary hooks with pliers or file the barb off. Barbed hooks can tear the flesh when being removed, which can lead to infection and possibly death. Barbless hooks also add to the sport of fishing, but make sure you keep tension on the line!

Large hooks (generally size 6 or larger) are very effective at reducing the number of small fish you catch. Smaller fish cannot take a larger hook and cannot get caught. Larger hooks catch larger fish and are less likely to gut hook any blue cod you accidentally catch.