

**Species under consideration for introduction into the
Quota Management System on 1 October 2009**

Consultation Document

10 June 2008

CONTENTS

Contents	2
Executive summary.....	3
Section 1 - Decision on of species into the QMS on 1 October 2008	5
Section 2 - Species considered for introduction into the QMS on 1 October 2009.....	7
Section 3 – Provisional catch history: implications of not introducing certain species into the QMS on 1 October 2009	16
Section 4 – Options for management of seaweeds	21

EXECUTIVE SUMMARY

- 1 This paper is divided into four sections.
- 2 **Section 1** relates to consultation undertaken by the Ministry of Fisheries (MFish) in 2007 regarding 10 species or species groups that were being considered for introduction into the Quota Management System (QMS) on 1 October 2008. The species or species groups were hagfish, lamprey, bellowsfish species, seahorse, scabbardfish, capro dory, mirror dory, silver dory, broadnosed sevengill shark and sharpnosed sevengill shark.
- 3 MFish's decisions regarding the 10 species or species groups are presented. MFish will not be proceeding with any further steps to introduce any of the 10 species or species groups into the QMS in 2008. Accordingly, there will be no new species introduced into the QMS in 2008.
- 4 **Section 2** relates to the annual process that MFish is required to undertake to identify what stocks or species will be considered by the Minister of Fisheries for QMS introduction. It specifies the process MFish undertakes to identify and prioritise relevant species. It then presents, for stakeholder consultation, preliminary information briefs and risk analyses for 10 species or species groups that have been identified as meeting the criteria for introduction into the QMS on 1 October 2009.
- 5 The species or species groups identified are octopus, large ostrich foot whelk, carpet shark, hammerhead shark, javelinfish, orange perch, rattails, redbait, seal shark and silver dory. Interim conclusions from the preliminary risk analyses are that none of the 10 species or species groups be introduced into the QMS on 1 October 2009. Stakeholder submissions on the preliminary risk analyses are sought.
- 6 This section also signals MFish's approach to dealing with all stocks or species listed on Schedule 4C. MFish proposes that, at some point in the future, all stocks or species be removed from this Schedule and either become subject to an open access management regime or be assigned some form of protected species status. Those species subject to an open access regime would then be monitored to determine whether future management measures of some sort may be required.
- 7 **Section 3** deals with catch history. A section on catch history has been included because 1 October 2009 represents the last occasion when quota for particular species introduced into the QMS can be allocated on the basis of catch history. The species concerned are those listed on Schedules 4C and 4D of the Fisheries Act 1996, including species such as octopus, rattails, seal shark and javelinfish.
- 8 MFish has identified approximately 900 potential holders of catch history and wishes to ensure that they are aware of the "expiry date" for catch history-based quota allocation.
- 9 **Section 4** informs stakeholders of the processes being undertaken by the Ministry of Fisheries (MFish) on options for managing seaweed stocks.

Deadline for Submissions – 1 August 2008

- 10 MFish welcomes submissions relating to any issue in this document. In particular MFish is interested in stakeholder views regarding species under consideration for introduction into the QMS on 1 October 2009 (section 2 and Appendix 1) and the expiry of provisional catch history (section 3).

Species considered for introduction into the QMS on 1 October 2009 (section 2 and Appendix 1)

- 11 If you have additional information on any of the 10 species or species groups being considered by MFish for introduction into the QMS on 1 October 2009 MFish would like to hear from you.
- 12 MFish also seeks stakeholders' views on whether current management of the 10 species or species groups is not ensuring the sustainability or is not providing for the utilisation of the species.
- 13 Additionally, MFish is interested in comments from stakeholders regarding alternative species that MFish could consider for future introduction into the QMS (i.e. species that meet criterion 4 or criterion 7 as discussed later in section 2).

Provisional catch history expiring on 1 October 2009 (section 3)

- 14 MFish seeks stakeholders' views regarding the species for which quota allocation based on PCH will occur only if the species is introduced into the QMS on 1 October 2009. In particular, MFish welcomes comments on whether utilisation of a species may be enhanced if the species was introduced into the QMS and quota allocated to Industry.
- 15 All written submissions on this consultation document must be received by MFish by **Friday 1 August 2008**. If you intend to make a submission but need an extension of time, please contact:

Tracey Steel – telephone (04) 819 4585

Late submissions may not be able to be considered.

- 16 Written submissions should be sent directly to:

Tracey Steel
Ministry of Fisheries
P O Box 1020
Wellington

or faxed to 04 819 4208
or emailed to tracey.steel@fish.govt.nz

- 17 All submissions are subject to the Official Information Act 1982 and can be released, if requested, under the Act. If you have specific reasons for wanting to have your submission withheld, please set out your reasons in the submission. MFish will consider those reasons when making any assessment for the release of submissions if requested under the Official Information Act 1982.

SECTION 1 - DECISION ON INTRODUCTION OF SPECIES INTO THE QMS ON 1 OCTOBER 2008

- 1 In May 2007 MFish released a paper for consultation to stakeholders containing preliminary risk analyses for 10 species or species groups that were candidates for QMS introduction on 1 October 2008. The species or species groups had been identified using a draft QMS introduction standard and were:
 - i) Hagfish
 - ii) Lamprey
 - iii) Bellowsfish species
 - iv) Seahorse
 - v) Scabbardfish
 - vi) Capro dory
 - vii) Mirror dory
 - viii) Silver dory
 - ix) Broadnosed sevengill shark
 - x) Sharpnosed sevengill shark
- 2 Submissions in response to the preliminary risk analyses were largely unanimous in opposing further consideration of these species for QMS introduction. MFish concurs with the majority of submitters who supported this position and will not proceed with further steps to introduce any of the 10 species or species groups into the QMS on 1 October 2008.
- 3 The draft QMS introduction standard proposed that if stocks or species listed on Schedule 4C of the Fisheries Act 1996 were not identified as being a candidate for QMS introduction they should be removed from Schedule 4C. For this reason MFish proposes to ask the Minister to make a determination to remove lamprey (*Geotria australis*) and seahorse (*Hippocampus abdominalis*) from Schedule 4C of the Act.
- 4 However because of generic concerns about sustainability of shark species MFish considers it prudent for the Minister to postpone any consideration of removing sharpnosed sevengill shark from Schedule 4C until such time as the New Zealand's National Plan of Action for the Conservation and Management of Sharks (NPOA-Sharks) has been finalised and the species has been evaluated against the proposed prohibited utilisation standard contained within the NPOA-Sharks.
- 5 The NPOA-Sharks was released for consultation in October 2007 and includes proposed measures to improve the information reported by commercial fishers on the take of shark

species. The finalised NPOA-Sharks is expected to be provided to the Minister of Fisheries for his approval in June 2008.

- 6 MFish anticipates that better information will indicate more definitively whether other management measures should be considered for both sharpnosed and broadnosed sevengill shark in the future.

SECTION 2 - SPECIES CONSIDERED FOR INTRODUCTION INTO THE QMS ON 1 OCTOBER 2009

Introduction

- 1 Since 2002 MFish has undertaken a programme to introduce species into the QMS as part of its strategic direction to manage fisheries under the QMS framework and to meet its obligations to Maori under the Deed of Settlement.
- 2 MFish considers the QMS framework generally provides the best means of meeting the purpose of the Fisheries Act 1996 (the Act) – to provide for utilisation while ensuring sustainability. However MFish acknowledges that the QMS may not always be the most appropriate framework to manage some stocks or species, and that other means of active management, or indeed no active management, may be most appropriate.
- 3 In November 2006 MFish released the draft QMS introduction process standards and organisational procedures for consultation. The finalised standards were subsequently approved by the Minister of Fisheries on 18 May 2008. The organisational procedures supporting these standards were also approved by the MFish Strategic Leadership Team in May 2008.
- 4 Standards are defined as the mandatory minimums of performance required to ensure outcomes are met. In the case of non-QMS species the primary standard requires MFish to carry out an annual process to determine what stocks or species will be considered by the Minister of Fisheries for QMS introduction.
- 5 Organisational procedures set out processes that enable MFish to implement standards. MFish has used the organisational procedures developed for the non-QMS standards to identify candidate stocks for possible QMS introduction on 1 October 2009.
- 6 Once a species has been identified as meeting the criteria for possible QMS introduction, it is likely that it will be considered at some stage over a period of several years. This is because MFish has limited resources and there are likely to be more species identified than MFish can consider in any one year. The species considered in any one year will therefore be a subset of the total number of species that have actually been identified as meeting one or more criterion.

Identification of stocks

- 7 The species or species groups detailed in Appendix 1 to this paper were identified by application of the criteria contained in the organisational procedures, which are available in the fisheries plans and standards section of the MFish website <http://fpcs.fish.govt.nz/>. Each criterion, and the stocks that meet that criterion, are discussed below.

Criterion 1 – Schedule 4C

- 8 Schedule 4C of the Act lists those stocks and species for which the section 93 permit moratorium continues to apply. The moratorium prevents additional permits from being issued that would allow commercial fishers to take the species listed on this Schedule.

Additionally, if a stock or species is listed on this Schedule it also means that, if introduced into the QMS on or before 1 October 2009, quota allocation will be by way of provisional catch history (PCH).

- 9 Schedule 4C contains a large number of stocks or species. For the purposes of this paper MFish has only considered those stocks or species for which PCH is believed to exist. In this context PCH means that a commercial fisher caught and reported taking a stock or species between 1 October 1990 and 30 September 1992.
- 10 The Schedule 4C species for which PCH is believed to exist (excluding seaweed) are listed in the table below.

Table 1: Table listing the species on Schedule 4C of the Fisheries Act 1996 (excluding seaweed) for which provisional catch history is believed to exist.

Species	Comments
Basking shark	It is likely that this species will soon be given a protected species status. It will not be considered further.
Hammerhead shark	
Seahorse	This species was considered for introduction into the QMS on 1 October 2008. The outcome of that process was the decision not to proceed with introduction. MFish considers that no additional information has become available that would lead to that decision being reviewed.

- 11 In addition to the species listed in the table above several seaweed species are also likely to have catch history. However MFish has decided that despite meeting this criterion, seaweeds will not be considered for introduction into the QMS using the same process as used for other species. Further discussion on future management of seaweed stocks is provided in section 4 of this paper.

Criterion 2 – Schedule 4D

- 12 Schedule 4D of the Act lists species for which quota is to be allocated on the basis of provisional catch history if introduced into the QMS on or before 1 October 2009. All species listed on Schedule 4D are included in this current process. The species or species groups are:
 - i) Javelinfish
 - ii) Octopus
 - iii) Orange perch
 - iv) Rattails
 - v) Redbait
 - vi) Seal shark
 - vii) Silver dory

13 Silver dory was also included in the list of species considered as candidates for introduction into the QMS on 1 October 2008. Despite the decision not to progress introduction in 2008 the species has again been identified as a candidate for introduction in 2009 because of the significant amount of PCH that is likely to exist. See section 3 of this paper for further analysis of this issue.

Criterion 3 – Variation in catch

14 This criterion requires MFish to undertake an analysis of total landings of all non-QMS stocks or species over the three years preceding each annual review. Landings are then totalled for each 6-month period within the three years (1 October – 31 March and 1 April – 30 September).

15 The criterion lists two values that are used to define a significant change for a given stock. They are:

- Landings of a species totalled over all Fisheries Management Areas (FMAs) exceeding 20 tonnes for any of the 6 month periods **and** the difference in catch between the minimum and maximum 6 monthly totals exceeding fifty percent of the minimum 6 monthly total; or
- Landings of a species totalled over all FMAs exceeding 100 tonnes for any of the 6 month periods

16 The species or species groups that meet the variation in catch criterion are listed in the table below. Information was taken from landing information supplied on catch effort returns for the period 1 October 2003 to 30 September 2007. The table does not include those Schedule 4C or 4D species that also meet this criterion.

Table 2: Table listing the species that meet the variation in catch criterion.

Species name	Catch criterion met	Comment
Albacore	100t	Minister decided against QMS introduction in 2005 (both species) and 2007 (albacore only). Will not be considered as part of this process.
Skipjack tuna	100t	
Conger eel	100t	Minister decided not to introduce in 2007. Will not be considered as part of this process.
Banded bellowsfish	100t	These species were considered for introduction into the QMS on 1 October 2008. The decision was made not to proceed with introduction and these species will not be considered again as part of this process.
Bellowsfish	100t	
Crested bellowsfish	20t	
Scabbardfish	100t	
Hagfish	100t	
Capro dory	20t	
Mirror dory	20t	
Crab (unspecified)	100t	
Deepwater dogfish	100t	
Other sharks and dogs	100t	
Morids	20t	

	20t	
Seaweed (general)	100t	Will be considered separately.
Shovelnose dogfish	100t	Minister decided not to introduce in 2004. Will not be considered as part of this process.
Northern spiny dogfish	20t	
Carpet shark	100t	
Smooth red swimming crab	100t	
Silverside	100t	
Slender tuna	100t	
Black cod	20t	
Dealfish	20t	
Eagle ray	20t	
Baxter's lantern dogfish	20t	
Deepsea flathead	20t	
Hairy conger	20t	
Japanese gurnard	20t	
Koheru	20t	
Long-nosed chimaera	20t	
Hairy red swimming crab	20t	
Oilfish	20t	
Porcupine fish	20t	
Common roughy	20t	
Rudderfish	20t	
Southern boarfish	20t	
Slickhead	20t	
Spotted stargazer	20t	
Thresher shark	20t	
Toadfish	20t	
Witch	20t	
Warty squid	20t	

17 See paragraph 21 below for explanation regarding which species listed in Table 2 above that will be considered for introduction into the QMS on 1 October 2009.

Criterion 4 – Other information

18 This criterion covers those stocks or species where there is additional information suggesting a sustainability or utilisation concern. The only species considered to have met this criterion is the large ostrich foot whelk (*Struthiolaria papulosa*), which is listed on Schedule 4C of the Act and is therefore still subject to the permit moratorium. MFish has received an expression of interest in purchasing quota shares for this species should it enter the QMS.

Criteria 5 and 6 – International obligations and adverse environmental effects

19 No species were considered to have met either of these criteria.

Criterion 7 – Identification by stakeholders

20 This criterion applies to those stocks or species identified by stakeholders as having sustainability and/or utilisation concerns. MFish has not received any information from stakeholders that has lead to a stock or species being considered to have met this criterion.

Prioritisation for consideration for introduction into the QMS on 1 October 2009

21 MFish does not have the resources to consider all of the species identified as meeting one or more of the criteria. As noted in paragraph 9 only those criterion 1 (Schedule 4C) species for which PCH is thought to exist were initially considered. Of the three Schedule 4C species likely to have PCH only hammerhead shark will be considered for introduction in 2009.

22 Similarly, there are far more criterion 3 (variation in catch) species than MFish can consider for introduction in 2009 even after excluding those species that have either been considered for introduction previously or for which additional information is required. MFish subjected the remaining species listed on this Schedule to an internal prioritisation process amongst business groups. This resulted in only carpet shark being able to be considered for introduction into the QMS on 1 October 2009. It is likely that during 2009 additional species listed on this table will be considered for introduction into the QMS on 1 October 2010.

Finalised list of species

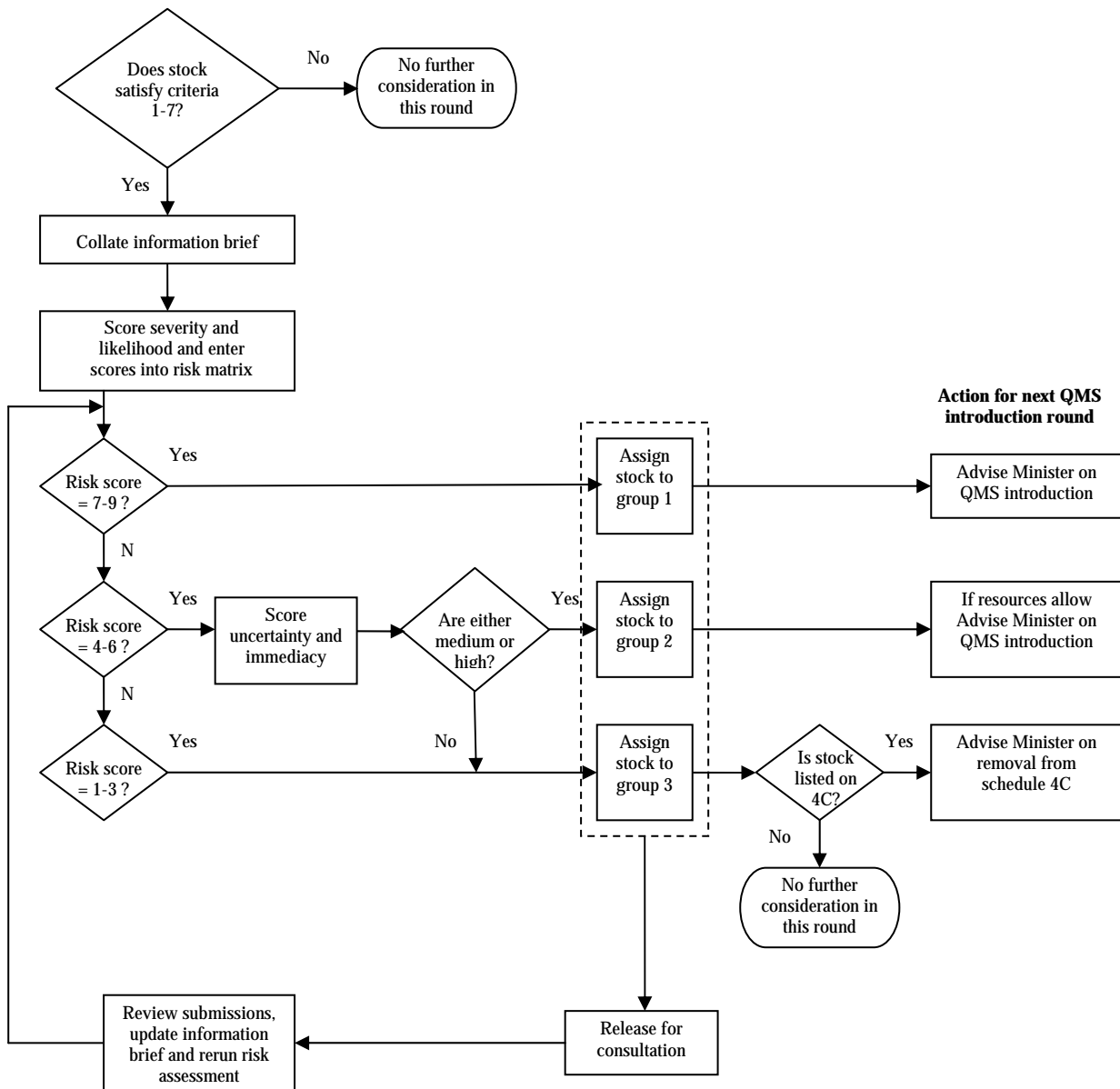
23 The species identified and prioritised by MFish as being considered for introduction into the QMS on 1 October 2009 are:

- i) Octopus
- ii) Large ostrich foot whelk
- iii) Carpet shark
- iv) Hammerhead shark
- v) Javelinfish
- vi) Orange perch
- vii) Rattails
- viii) Redbait
- ix) Seal shark
- x) Silver dory

Process

24 Under the present system MFish undertakes two separate process steps in order to introduce a stock or species into the QMS. As noted in paragraph 10 the primary standard requires an annual process to be carried out to determine what stocks or species will be considered by the Minister of Fisheries for QMS introduction. The first process

step therefore (this document) involves using the criteria contained in the organisational procedures in order to identify stocks or species that can be considered for introduction into the QMS. The diagram below represents a flow chart of the annual process.



25 Once identified, an information brief is compiled, which is then used to inform a risk analysis. The risk analysis compares the information presented in the information brief against three generic management objectives to determine the risk a given stock faces to achieving these objectives.

26 Where the risk analysis identifies that there is a **high** risk that the management of a non-QMS stock or species is not meeting the generic objectives,* that stock or species will be included on the first year of the QMS introduction schedule and will be considered by the Minister of Fisheries for QMS introduction in the next available QMS introduction round (the second process step).

* The three generic objectives have been derived from the criteria for QMS introduction in s 17(B)(1) of the Fisheries Act 1996. See Appendix 1.

- 27 Where the risk analysis identifies that there is a **low** risk that the management of a stock or species listed on Schedule 4C is not meeting the generic objectives, that stock or species will be considered by the Minister of Fisheries for removal from Schedule 4C in the next available QMS introduction round.
- 28 The information available to compile an information brief is typically limited. For this reason stakeholders are asked to contribute any additional information they may have that may assist with determining whether a particular species should or should not be introduced into the QMS.
- 29 At the end of the consultation period the additional information from stakeholder submissions will be incorporated into the information brief / risk analyses, which will be re-evaluated. Should any species be identified as high risk they will be considered for QMS introduction on 1 October 2009 (this is the earliest date QMS introduction can occur).
- 30 For high risk species the second process step would commence with MFish preparing an Initial Position Paper (IPP) for consultation with stakeholders. The IPP would discuss whether management under the QMS better meets the Minister's obligations under the Act. It would propose such things as management area boundaries, the unit of measure and the fishing year. After consultation with stakeholders a final advice paper (FAP) would be prepared for the Minister. Should the Minister decide to introduce a species into the QMS a Gazette notice would be prepared to give effect to that decision and MFish would commence the next step of that process, the setting of sustainability measures and other management controls.
- 31 For low risk Schedule 4C stocks or species an alternative process would commence with MFish preparing a paper for consultation with stakeholders on removing those stocks or species from Schedule 4C. The IPP would need to discuss whether an open access regime was the most appropriate option or whether some type of management measure was still necessary. After consultation with stakeholders an FAP would be prepared for the Minister for his decision.
- 32 Preliminary information briefs and risk analyses for the species listed in paragraph 23 are contained in Appendix 1 to this document.

Interim conclusions from preliminary risk analyses

- 33 The interim conclusions from the preliminary risk analyses in Appendix 1 are presented in the table below.

Table 3: Interim conclusions from preliminary risk analyses (prior to stakeholder consultation).

Species	Risk of not meeting objectives	Preliminary conclusion
Octopus	Low	Will <u>not</u> proceed to process step 2 (being considered by Minister for introduction into QMS on 1 October 2009).
Large ostrich foot whelk	Low	Proceed to process of removal from Schedule 4C of Fisheries Act 1996. No further consideration for introduction into QMS on 1 October 2009.

Carpet shark	Low	Will <u>not</u> proceed to process step 2 (being considered by Minister for introduction into QMS on 1 October 2009).
Hammerhead shark	Low	Will <u>not</u> proceed to process step 2 (being considered by Minister for introduction into QMS on 1 October 2009). <i>See comment below.</i>
Javelinfinch	Low	Will <u>not</u> proceed to process step 2 (being considered by Minister for introduction into QMS on 1 October 2009).
Orange perch	Low	Will <u>not</u> proceed to process step 2 (being considered by Minister for introduction into QMS on 1 October 2009).
Rattails	Low	Will <u>not</u> proceed to process step 2 (being considered by Minister for introduction into QMS on 1 October 2009).
Redbait	Low	Will <u>not</u> proceed to process step 2 (being considered by Minister for introduction into QMS on 1 October 2009).
Seal shark	Medium	Despite being in Group 2 MFish considers that nothing has changed since the Minister declined to introduce this species into the QMS on 1 October 2007. Will <u>not</u> be considered for introduction on 1 October 2009.
Silver dory	Low	Will <u>not</u> proceed to process step 2 (being considered by Minister for introduction into QMS on 1 October 2009).

- 34 Hammerhead shark is listed on Schedule 4C of the Act. For such species, where the risk analysis identifies that there is a low risk that the management of a stock or species listed on Schedule 4C is not meeting the generic objectives, the standard requires that stock or species to be considered by the Minister of Fisheries for removal from Schedule 4C in the next available QMS introduction round.
- 35 Because of generic concerns about sustainability of shark species MFish considers it prudent for the Minister to postpone any consideration of removing hammerhead shark from Schedule 4C until such time as the NPOA-Sharks has been finalised and the species has been evaluated against the proposed prohibited utilisation standard.

Removal of species from Schedule 4C of Fisheries Act 1996

- 36 When Schedule 4C of the Act was put in place in 2004 it was intended to be an interim measure. That is, an assessment would be made to determine the most appropriate management framework for the species included on the Schedule. To date, several stocks and species that were listed on Schedule 4C have been removed from the Schedule and introduced into the QMS.
- 37 Over time, MFish intends to ask the Minister to make a determination regarding management measures for all remaining 4C species. One option is to introduce them into the QMS. The other option available to the Minister will be to remove them from Schedule 4C, in which case they will become an open access species. Being open access does not preclude a species from being introduced into the QMS at some later date if the

Minister decides that management under the QMS is the best means of meeting his statutory obligations.

- 38 MFish envisages however that being subject to the open access regime may not ensure the sustainability of some species. In these cases the Minister may be asked to make a decision regarding further measures such as prohibiting the taking or possessing of the species in question.
- 39 The process of determining the most appropriate management measures for Schedule 4C species will run separately to the annual process MFish is required to carry out to identify stocks or species that can be considered for QMS introduction.

SECTION 3 – PROVISIONAL CATCH HISTORY: IMPLICATIONS OF NOT INTRODUCING CERTAIN SPECIES INTO THE QMS ON 1 OCTOBER 2009

- 1 For the vast majority of species that have been introduced into the QMS since 1986 catch history has been used as the basis for quota allocation. If a commercial fisher caught and reported taking a particular species during a designated qualifying period they were eligible to be allocated quota based on the catch they reported.
- 2 In 2004 the Act was changed and the use of catch history as the sole basis for quota allocation started to be phased out. Of particular relevance is section 29A of the Act, which lists the criteria for allocating quota based on provisional catch history (PCH). This section states that for any stock or species listed in Schedules 4C or 4D of the Act quota must be allocated on the basis of catch history only if the stock or species is brought into the QMS on or before 1 October 2009. For all other species quota is to be allocated in accordance with section 29B of the Act (80% to the Crown and 20% to Te Ohu Kai Moana Trustee Ltd).
- 3 The current process therefore represents the last opportunity for quota allocation to be undertaken on the basis of PCH for those species listed on Schedules 4C and 4D of the Act should they be introduced into the QMS. MFish believes it is under an obligation to at least consider those species for introduction into the QMS on 1 October 2009.
- 4 The current process does not, however, represent the last opportunity for introduction of those species into the QMS. Should the Minister decide to introduce a stock or species on either Schedule into the QMS after 1 October 2009 quota will simply be allocated in accordance with section 29B of the Act (80% will be allocated to the Crown and 20% to Te Ohu Kai Moana Trustee Limited).
- 5 For the purposes of section 29A of the Act a commercial fisher having PCH for a stock means that the fisher:
 - Had a fishing permit at any time during the period 1 October 1990 – 30 September 1992; and
 - Caught the stock in question during that period; and
 - Reported landing that stock on a catch landing return (CLR) or catch, effort, and landing return (CELR); and
 - Gave the CLR or CELR to the chief executive prior to 1 October 1994.
- 6 PCH exists for all stocks on Schedule 4D but is believed to exist for only a few of the stocks on Schedule 4C. Information on catches of 4C and 4D stocks from the 1990-1992 period is able to be extracted from MFish's catch effort database. However the information has not yet been validated and is possibly incomplete and inaccurate. Nevertheless, it provides an indication of how many fishers are likely to have PCH as well as the extent of total catches. A summary of the non-validated information is presented below.

Table 4. Species listed on Schedule 4C of the Fisheries Act 1996 for which provisional catch history (PCH) is not known to exist.

Common name	Scientific name	Species code
Lamprey	<i>Geotria australis</i>	LAM
Sharpnose sevengill shark	<i>Heptranchias perlo</i>	HEP
Whale shark	<i>Rhincodon typus</i>	WSH
Black mussel	<i>Xenostrobus pulex</i>	LBM
Blue mussel	<i>Mytilus galloprovincialis</i>	MSB
Catseye	<i>Turbo smaragdus</i>	LUN
Common rock crab	<i>Hemigrapsus edwardsi</i>	CRK
Hairy-handed crab	<i>Hemigrapsus crenulatus</i>	HHC
Northern smooth shore crab	<i>Cyclograpsus insularum</i>	NCR
Purple rock crab	<i>Leptograpsus variegates</i>	PCR
Red rock crab	<i>Plagusia chabrus</i>	REC
Smooth shore crab	<i>Cyclograpsus lavauxi</i>	SCR
Tunnelling mud crab	<i>Helice crassa</i>	HCR
Freshwater mussel	<i>Hydriddella menziesii</i>	HLA, HME
Koura	<i>Paranephrops planifrons</i> , <i>P. zealandicus</i>	KOU
Limpets	<i>Cellana ornate</i> , <i>C. radians</i> , <i>Notoacmea scopulina</i>	LIM
Mudsnail	<i>Amphibola crenata</i>	ACR
Sea anemone	<i>Actinia</i> spp.	SEN
Sponges	Phylum Porifera	ONG
Topshells	Members of the Family Trochidae, namely: <i>Melagraphia aethiops</i> , <i>Diloma zelandica</i> , <i>D. arida</i> , <i>D. subrostrata</i> , <i>D. bicanaliculata</i>	TPS, DTS
Whelks	<i>Thais orbita</i> , <i>Lepsiella scobina scobina</i> , <i>Haustrum haustorium</i> , <i>Cominella adpersa</i> , <i>C. maculosa</i> , <i>C. glandiformis</i> , <i>Penion dilatatus</i> , <i>Struthiolaria papulosa</i>	WHE (generic code)
Bladder kelp *	<i>Macrosystis pyrifera</i>	KBB
Brown kelp	<i>Ecklonia radiata</i>	ECK
Bull kelp *	<i>Durvillea</i> spp	KBL
Porphyra *	<i>Porphyra</i> spp	PRP
Sea lettuce	<i>Ulva</i> spp	ULV

* Provisional catch history does actually exist for one bladder kelp (*Macrosystis pyrifera*) stock and may exist for one bull kelp (*Durvillea* spp) stock and one Porphyra (*Porphyra* spp) stock. However it is not relevant to this process because if these stocks were to enter the QMS quota would be allocated via Individual Catch Entitlement (ICE) rather than PCH.

Table 5. Summary of non-validated catch information for the period 1 October 1990 – 30 September 1992 for species listed on Schedule 4C of the Fisheries Act 1996 for which provisional catch history is thought to exist.

Common name	Scientific name	Species code	No. of landing lines	Number of fishers	Total greenweight (kg)
Basking shark *	<i>Cetorhinus maximus</i>	BSK	145	11	111,889
Hammerhead shark	<i>Sphyrna zygaena</i>	HHS	243	31	16,015
Seahorse **	<i>Hippocampus abdominalis</i>	SHO	9	5	48
Agar weed	<i>Pterocladia lucida</i> , <i>P. capillacea</i>	PTE	107	2	4,771
Lessonia ***	<i>Lessonia variegata</i>	LES	-	-	-
Gracilaria weed ***	<i>Gracilaria chilensis</i>	GRA	-	-	-

* As noted earlier this species is likely to be given a protected species status in the near future and will not be considered for QMS introduction.

** In 2007 seahorse was identified as being a candidate for QMS introduction on 1 October 2008 although the decision was made not to introduce it. MFish considers that the small amount of catch during the qualifying years does not justify considering it for introduction again on 1 October 2009.

*** MFish is aware that at least one fisher fished for Gracilaria and Lessonia during the qualifying years. However it appears that catch, effort and landing returns may not have been completed fully and landing information was not supplied.

Table 6. Summary of non-validated catch information for the period 1 October 1990 – 30 September 1992 for species listed on Schedule 4D of the Fisheries Act 1996.

Common name	Scientific name	Species code	No. of landing lines	Number of fishers	Total greenweight (kg)
Javelinfish	<i>Lepidorhynchus denticulatus</i>	JAV	55	6	274,507
Octopus	<i>Pinnoctopus cordiformis</i> , <i>Octopus maorum</i>	OCT	22,590	774	401,556
Orange perch	<i>Lepidoperca aurantia</i>	OPE	123	21	134,972
Rattails	Family Macrouridae	RAT	1,010	67	1,236,151
Redbait	<i>Emmelichthys nitidus</i>	RBT	48	8	680,959
Seal shark	<i>Dalatias licha</i>	BSH	3,382	97	312,951
Silver dory	<i>Cyttus novaezealandiae</i>	SDO	1,872	146	337,484

- 7 MFish has identified nearly 900 fishers in total who may have PCH for one or more of the species on Schedules 4C or 4D. The qualifying years are becoming more and more historical however and MFish believes that the majority of those fishers no longer have any involvement in the fishing industry:
- 116 of the nearly 900 fishers have a client status of “cancelled”. This means that they are no longer active in the fishing industry in any way.
 - 47 fishers are classed as “gone no address”.
 - 700 do not have a current fishing permit.
 - Of the 700 without a fishing permit over 500 have not had a permit since at least 2001.
- 8 It is clear that there is likely to be a separation between current permit holders and those fishers with PCH. Should any of the species for which PCH exists enter the QMS on 1 October 2009 most current fishers are unlikely to be allocated quota. Although fishers with PCH are able to transfer their PCH to current permit holders it may prove problematic tracking down the people in question in order to i): make them aware of the QMS introduction / quota allocation process, and ii): get them to transfer their PCH to a current permit holder.
- 9 Some other points to remember regarding PCH include:

- The total greenweight (Tables 5 and 6 above) does not represent total PCH as PCH for individual fishers is calculated based on the 12 consecutive month period with the greatest catch within the two qualifying years.
 - The existence of PCH is not a reason in itself that the Minister can take into account when making a decision about whether to introduce a stock into the QMS.
- 10 Despite the second bullet point above MFish welcomes submissions regarding the issue of PCH for the species listed in tables 5 and 6. In particular MFish is interested in submissions regarding how utilisation of a stock may be enhanced if the stock were to enter the QMS and quota was to be allocated to Industry based on PCH.

SECTION 4 – OPTIONS FOR MANAGEMENT OF SEaweEDS

- 1 Stakeholders may be aware that in 2004/2005 MFish consulted on a proposal to introduce 7 species of seaweeds into the QMS on 1 October 2005. The species were:
 - Bladder kelp - *Macrocystis pyrifera* (KBB)
 - Gracilaria weed – *Gracilaria chilensis* (GRA)
 - Agar weed – *Pterocladia lucida* and *Pterocladia capillacea* (PTE)
 - Lessonia – *Lessonia variegata* (LES)
 - Bull kelp – *Durvillea* spp (KBL)
 - Brown kelp – *Ecklonia radiata* (ECK)
 - Porphyra – *Porphyra* spp (PRP)
- 2 At that time the Minister decided to defer making a decision on the introduction of seaweeds into the QMS in all areas as there was no consensus among stakeholders on which species should be introduced or the states of seaweed that should be introduced (beachcast, free-floating or attached). Additionally, there was no agreement regarding the approach to be adopted for the green-lipped mussel spat / seaweed fishery on Ninety-Mile Beach. In the absence of agreement the status quo has remained in place.
- 3 The Minister noted that further analysis of management options was required to ensure a workable reporting and compliance regime for seaweed was put in place to support the management of seaweed in its various states. The current MFish management framework for these species lacks consistency and is hampering the development of potentially valuable economic enterprises.
- 4 MFish is currently in the process of analysing management options for seaweed and developing a draft framework and strategy considering future management options for seaweed separately to this QMS introduction process. MFish is not yet seeking stakeholder views on management options for seaweed at this time but MFish will consult widely once this is completed.