

Drift Net Ban Area
Drift net prohibition in the Waikato River

Drift net prohibition

Drift netting is prohibited in any part of the Waikato River. A drift net is a net that acts by enmeshing, entrapping, or entangling any fish or marine life, and acts by drifting in the water, or on the surface of the water, and is not attached to a vessel or any point of land or the sea bed.

Disclosure

This brochure is only a guide to the new set net and drift net prohibitions in the Fisheries (Auckland and Kermadec Areas Amateur Fishing) Regulations 1986 and the Fisheries (Central Area Amateur Fishing) Regulations 1986. You can purchase the regulations from most bookshops.

You must check for set net prohibitions and restrictions in the area where you plan to fish – *before* you go fishing.

Penalties apply

Penalties apply for breaching the prohibitions to protect Hector's and Maui's dolphins. These include fines of up to \$20,000 and forfeiture of vessels and fishing gear.



PHOTO COURTESY OF DOC

Ministry of Fisheries Regional Offices

AUCKLAND	HAMILTON	NEW PLYMOUTH
09 820 1990	07 859 3126	06 755 9311

Report illegal fishing

 **call 0800 4 POACHER**
(0800 476 224)

For more information on fishing rules call your nearest Ministry of Fisheries office or go to: fish.govt.nz



Ministry of
Fisheries
Te Tautiaki i nga tini a Tangaroa

Recreational set net prohibitions for Maui's dolphins

North Island - west coast
(including areas in the Auckland and Kermadec and Central Fishery Management Areas)
FROM 1 OCTOBER 2008



PHOTO COURTESY OF DOC

New Zealand Government

Maui's dolphins are among the world's rarest dolphins. They are a sub-species of the Hector's dolphin species which is found only in New Zealand waters. The Department of Conservation classifies Maui's dolphins as "nationally critical".

Fishing is the greatest-known threat to Maui's dolphins. They can become entangled in set nets and drift nets and drown.

From 1 October 2008 there will be a prohibition on set nets and drift nets on the North Island's west coast between Maunganui Bluff and Pariokariwa Point to protect Maui's dolphins. This prohibition adds to the one implemented in 2003.

New recreational set net prohibition

Set netting is prohibited between Maunganui Bluff north of Kaipara Harbour and Pariokariwa Point north of New Plymouth – offshore to seven nautical miles.

Set netting is prohibited at the entrance of the Kaipara, Manukau and Raglan Harbours as well as at the Waikato River entrance (Port Waikato).

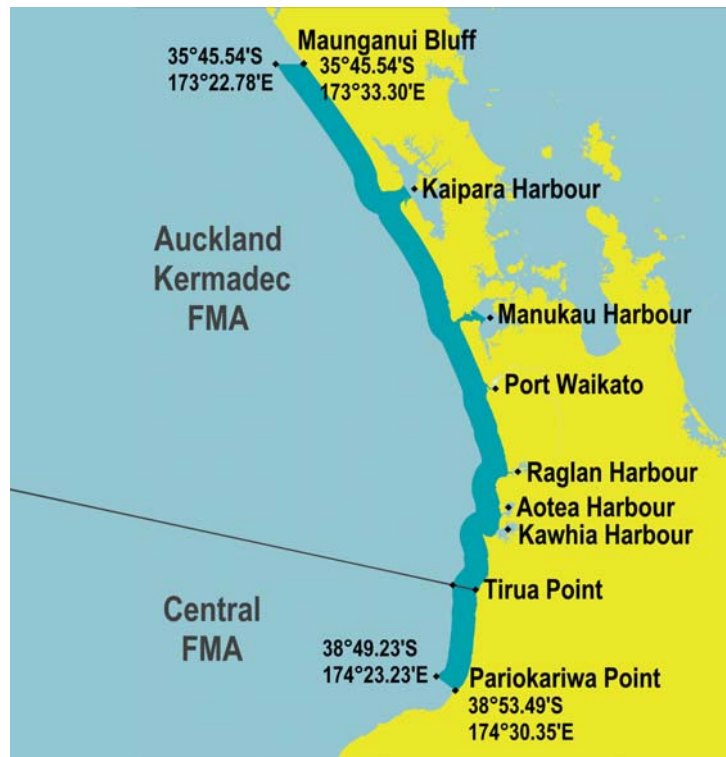
There are other set net prohibitions and restrictions in the Auckland and Kermadec Fishery Management Area and the Central Fishery Management Area that are not to protect Maui's dolphins.

You must check for set net prohibitions and restrictions in the area where you plan to fish – before you go fishing.

Go to fish.govt.nz or call your nearest Ministry of Fisheries office.

A set net includes a gill net or other sort of net that acts by enmeshing, entrapping, or entangling fish; but does not include a fyke net or hinaki.

AUCKLAND AND KERMADEC AND CENTRAL FISHERY MANAGEMENT AREAS Set net prohibition maps

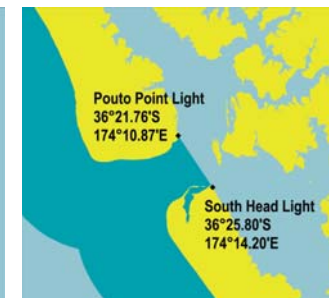


Set net prohibition between Maunganui Bluff and Pariokariwa Point

Set Net Ban Area

Important

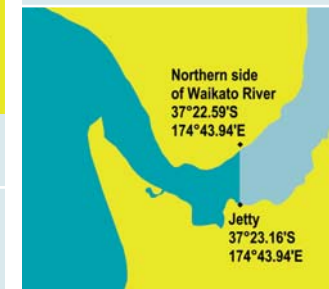
Unless specified, the prohibition does not apply to rivers and harbours – subject to any other fisheries restrictions, you can use set nets in these areas inside a straight line joining the natural entrance points of the waterway. The regulations define these points in some cases because they are not always clear.



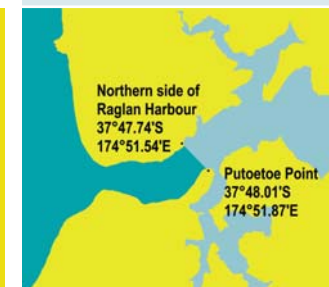
Set net prohibition in the Kaipara Harbour entrance



Set net prohibition in the Manukau Harbour entrance



Set net prohibition in the Waikato River entrance (Port Waikato)



Set net prohibition in the Raglan Harbour entrance