



## Commercial Beachcast Seaweed Harvesting Areas – FMA 2

from 26 October 2009

The Ministry of Fisheries has recently expanded the coastal areas open for the commercial harvesting of beachcast seaweed in FMA 2, which will come into effect 26 October 2009.

Commercial fishers in FMA 2 will be able to harvest beachcast seaweed in the following areas (see maps on the following pages):

- the coastal area between Cape Runaway (at 37°32.30'S and 177°59.00'E) and Tuaheni Point (at 38°42.48'S and 178°04.16'E)
- the coastal area between the western end of the Wairoa Estuary (at 39°03.85'S and 177°24.96'E) and Turakirae Head (at 41°26.27'S and 174°55.10'E), excluding the coastal area between Blackhead and Blackhead Point, and the areas within 1 km of Mohaka Estuary, Ahuriri Estuary, Waitangi Estuary, Onoke Spit, Cape Palliser, Castlepoint, or Te Aro Huru.

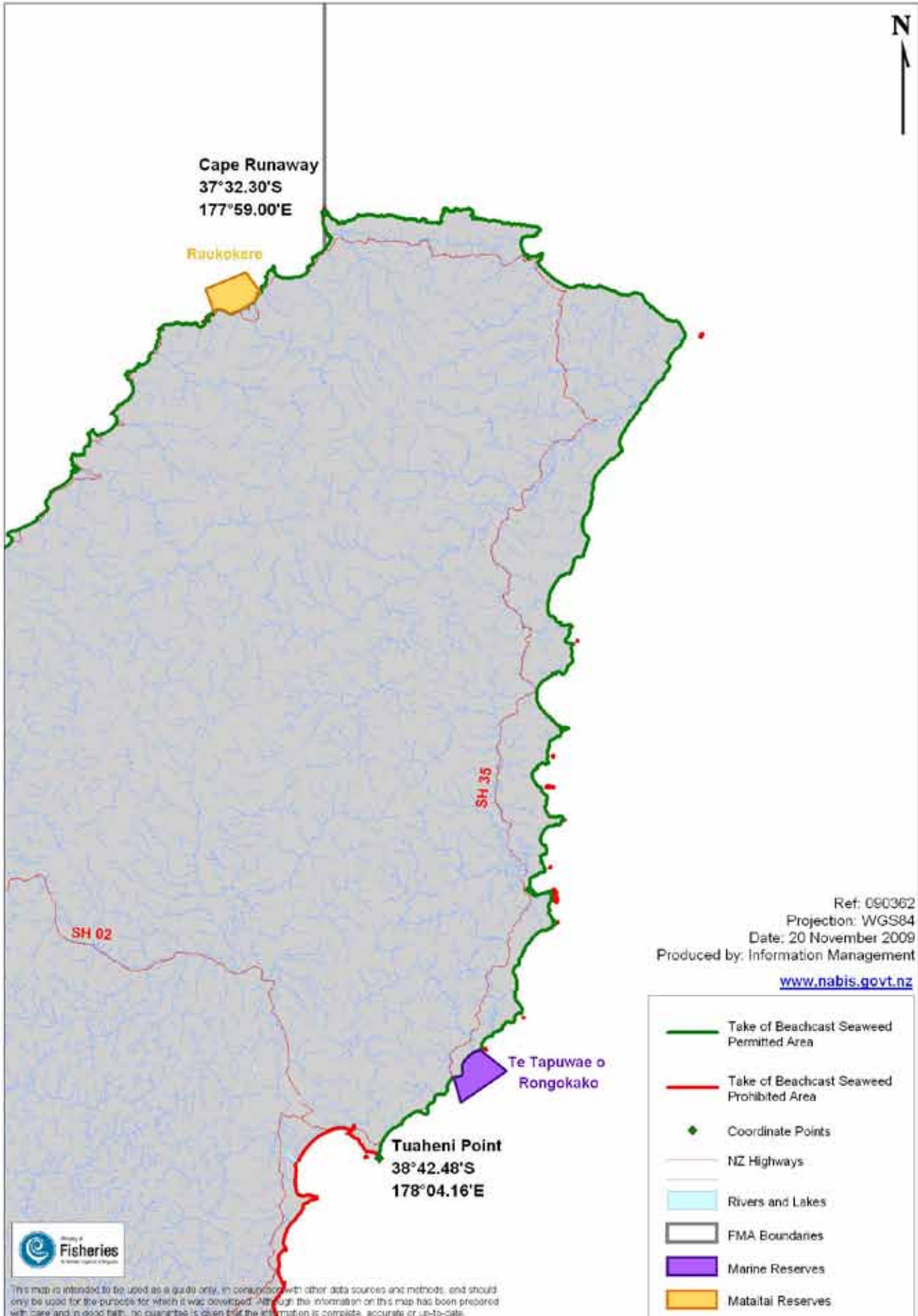


**Please remember there are additional areas within the above zones where the removal of any marine life, including beachcast seaweed, is prohibited by the Fisheries (Central Area Commercial Fishing) Regulations 1986. These are:**

- Cape Kidnappers: Within a 1 nautical mile radius of Cape Kidnappers (at 30°38.6'S and 177°42.1'E)
- Porongahau Estuary: Within a 3 nautical mile radius of Porongahau Estuary (at 40°15.4'S and 176°42.1'E)
- Herbertville Beach: Within a 2 nautical mile radius of Wainui River Mouth (at 40°29.8'S and 176°33.7'E)
- Owahanga River Mouth and beach: Within a 2 nautical mile radius of Owahanga River Mouth (at 40°40.8'S and 176°21.2'E)
- Castlepoint: Within a half nautical mile radius of the Castlepoint basin (at 40°54.7'S and 176°13.4'E)
- Cape Palliser: Within a 1 nautical mile radius of the Cape Palliser lighthouse (at 41°36.9'S and 175°17.3'E).

Please note that **no** commercial harvest of beachcast seaweed is permitted on any coastal island in FMA 2.

Commercial Beachcast Seaweed Harvesting Areas – FMA 2  
from October 26 2009



Commercial Beachcast Seaweed Harvesting Areas – FMA 2  
from October 26 2009

