



Ministry of

Fisheries

Te Tautiaki i nga tini a Tangaroa

FACTSHEET

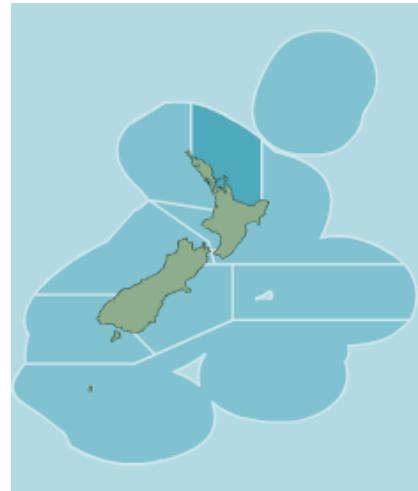
Commercial Beachcast Seaweed Harvesting Areas – FMA 1

from 26 October 2009

The Ministry of Fisheries has recently expanded the coastal areas open for the commercial harvesting of beachcast seaweed in FMA 1, which will come into effect on 26 October 2009.

Commercial fishers in FMA 1 will be able to harvest beachcast seaweed in the following areas (see maps on the following pages):

- the coastal area between Houhora Heads (western end of East Beach) (at 34°49.37'S and 173°08.77'E) and Cape Wiwiki (Bay of Islands) (at 35°09.33'S and 174°07.41'E), excluding Rangaunu Harbour, Mangonui Harbour, Whangaroa Harbour, and any area within 1 km of Takou River
- the coastal area between Cape Brett (at 35°10.33'S and 174°19.87'E) and Pakiri River (at 36°14.51'S and 174°43.54'E), excluding Whangaruru Harbour, Whananaki Estuary, Matapouri Bay, Whangarei Harbour, and any areas within 1 km of Ngunguru River, Horahora River, Pataua River, or Taiharuru River
- the coastal area between Tora (Gull) Point (at 36°41.72'S and 174°45.69'E) and Cackle Bay (at 36°53.98'S and 174°57.02'E)
- the coastal area around Great Barrier Island, excluding Whangapoua Harbour, Kiwiriki Bay, and any areas within 1 km of Awana Stream or Kaitoke Stream
- the coastal area between Orere Point (at 36°57.47'S and 175°14.95'E) and Kaiaua, on the western side of the Firth of Thames (at 37°06.67'S and 175°17.74'E)
- the coastal area between Tararu (at 37°06.79'S and 175°31.13'E) and Cape Runaway (at 37°32.30'S and 177°59.00'E), excluding Colville Bay, Coromandel Harbour, Manaia Harbour, Te Kouma Harbour, Ohiwa Harbour, Maketu Estuary, Waihi Estuary, and also excluding any areas within 1 km of Whakatane River, Waitotahi River, or Waioeka River.

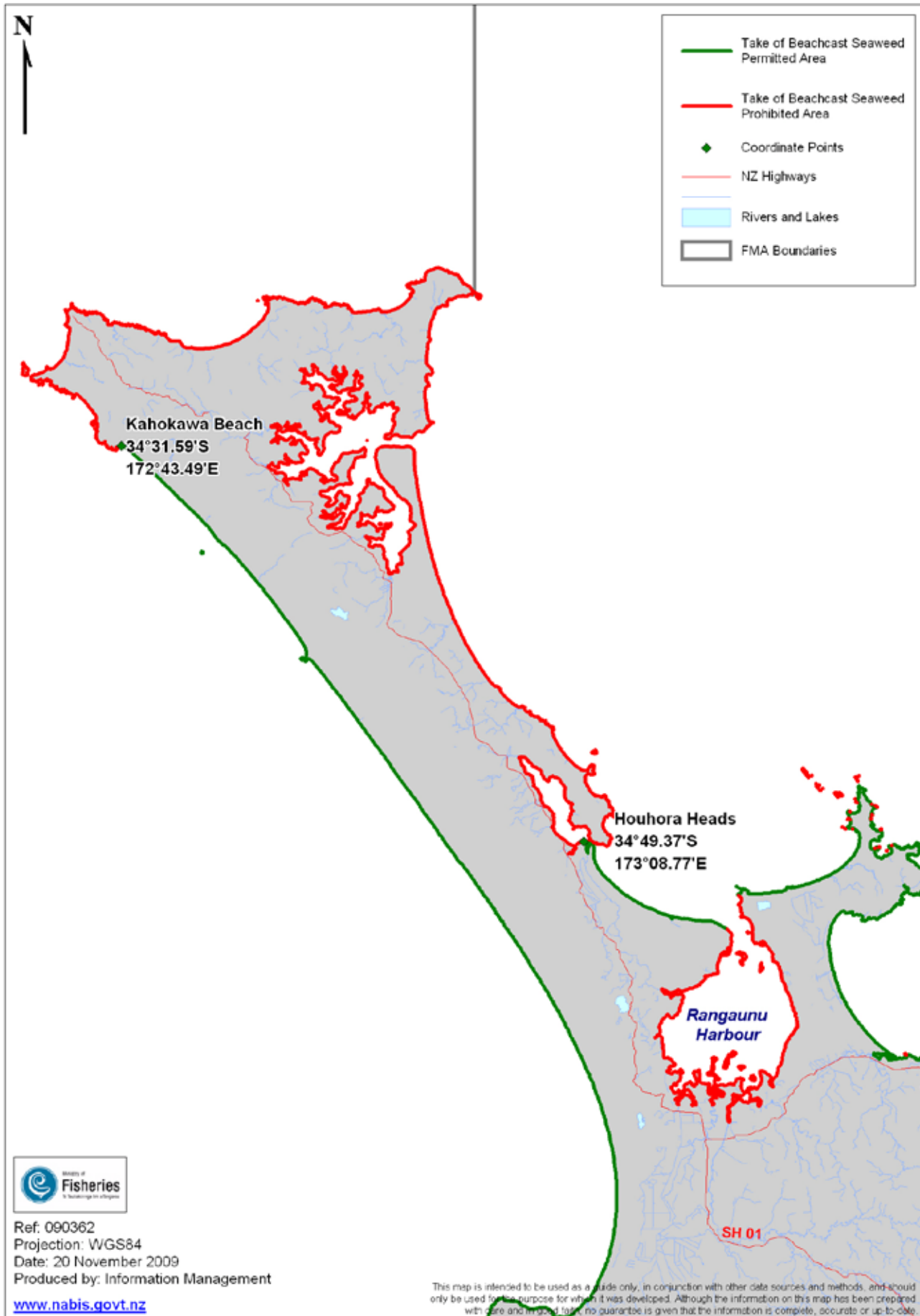


Please remember there are additional areas within the above zones where the removal of any marine life, including beachcast seaweed, is prohibited by the Fisheries (Auckland and Kermadec Areas Commercial Fishing) Regulations 1986. These are:

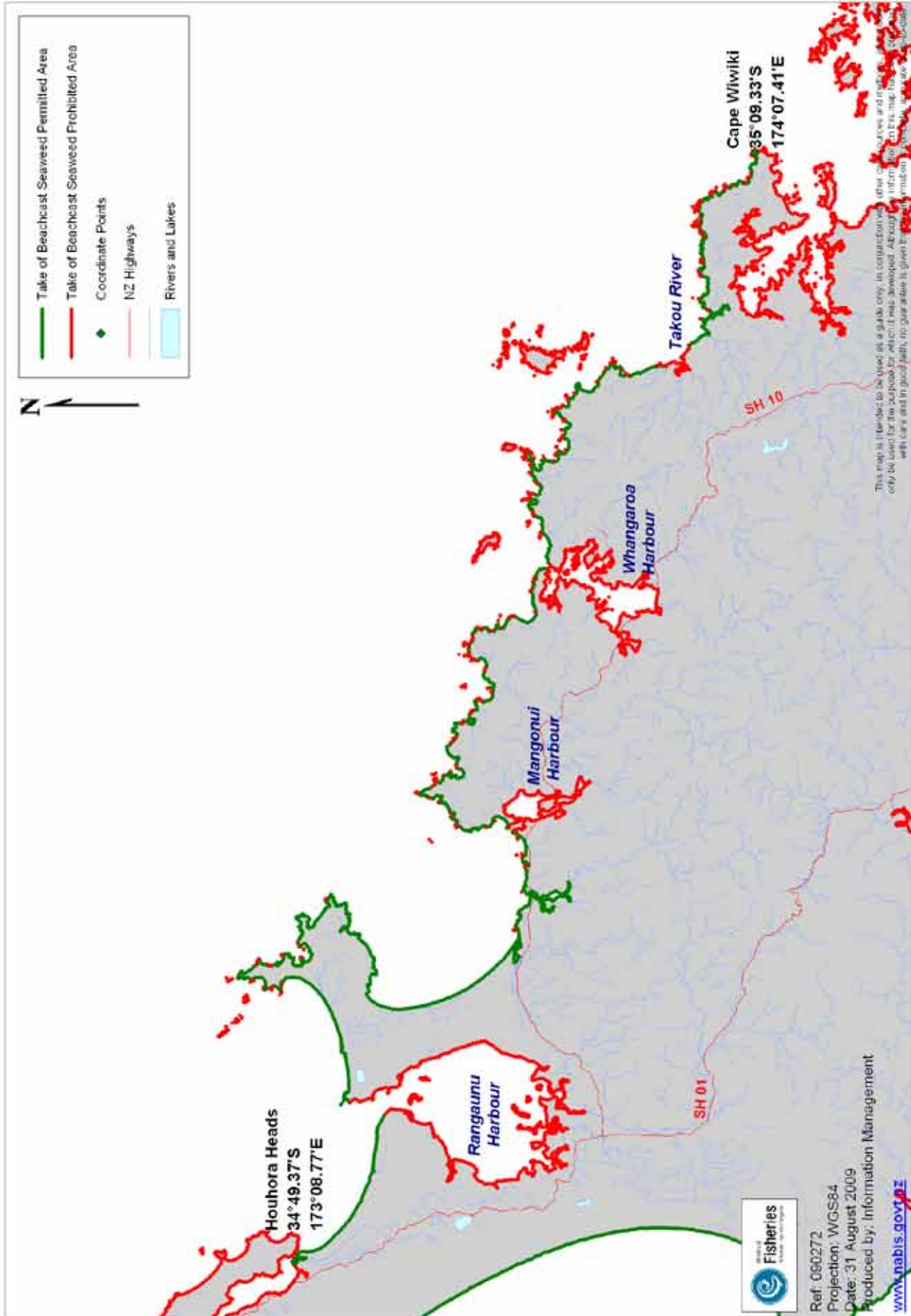
- Tawharanui Peninsula
- Mimiwhangata Peninsula, and
- Tauranga Harbour (i.e. the waters of Tauranga Harbour, which lie south of the Tauranga-Taneatua railway bridge).

Please note that **no** commercial harvest of beach cast seaweed is permitted on any coastal island, unless otherwise specified (e.g. Great Barrier Island).

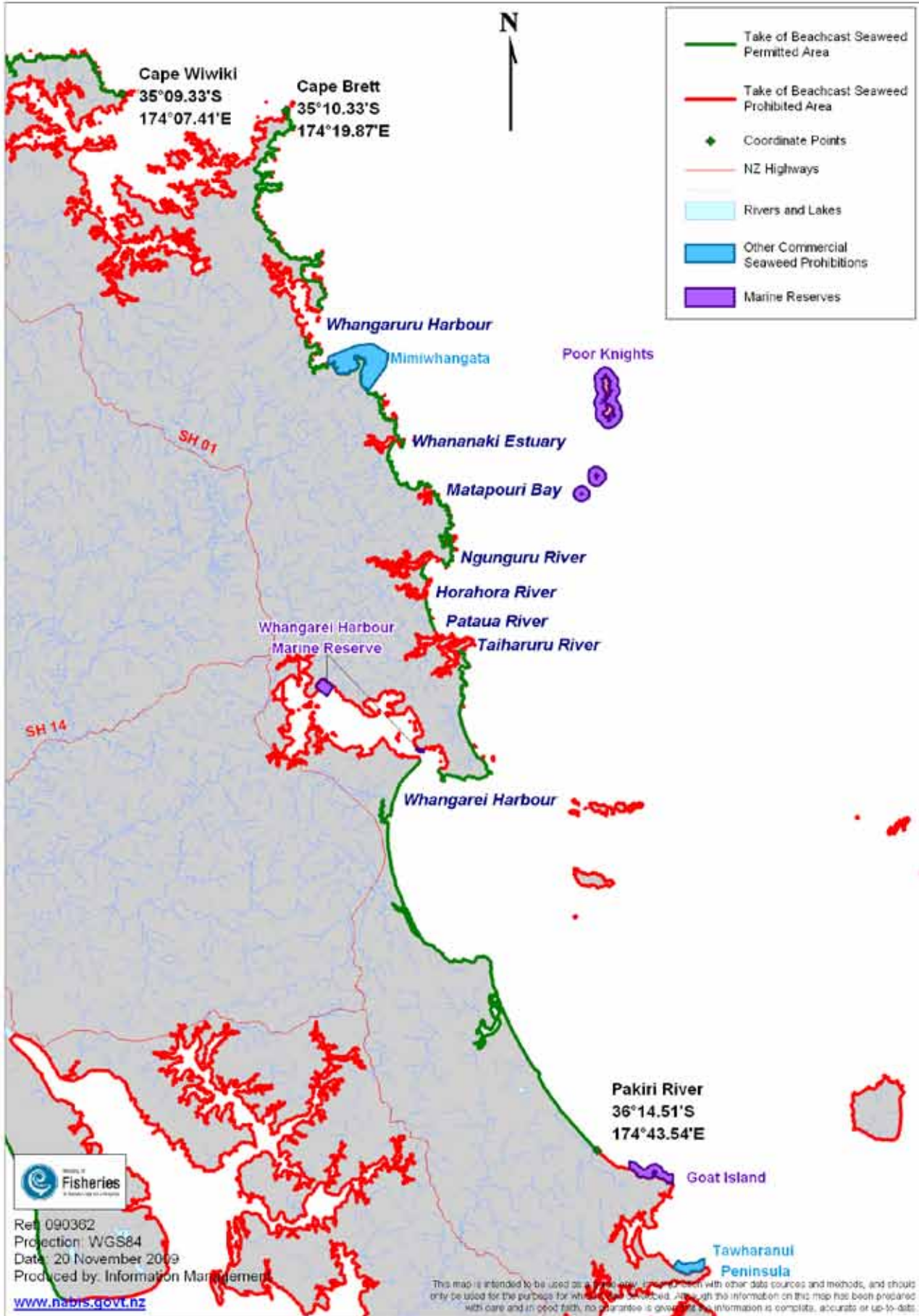
Commercial Beachcast Seaweed Harvesting Areas – FMA 1 from October 26 2009



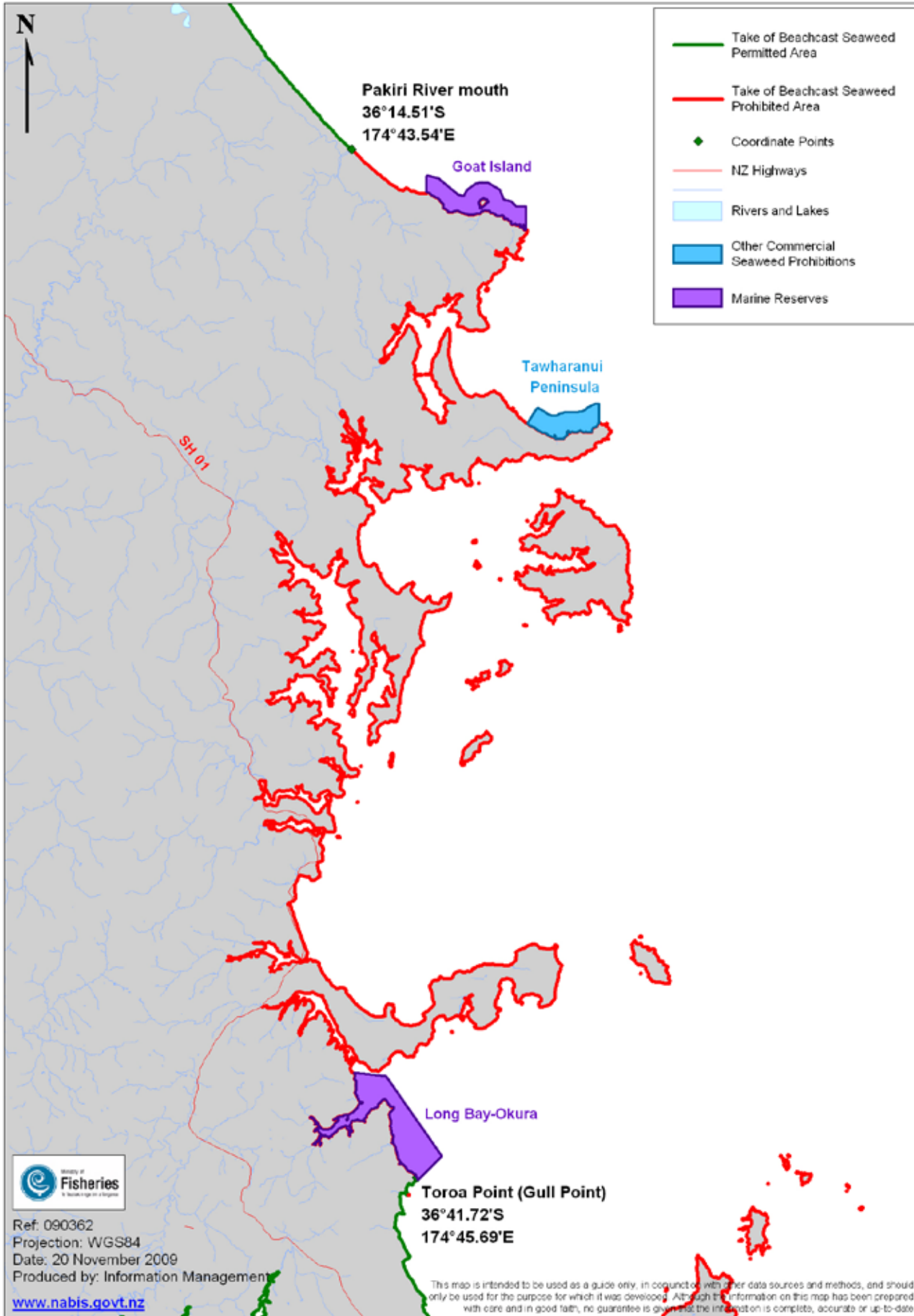
Commercial Beachcast Seaweed Harvesting Areas – FMA 1
from October 26 2009



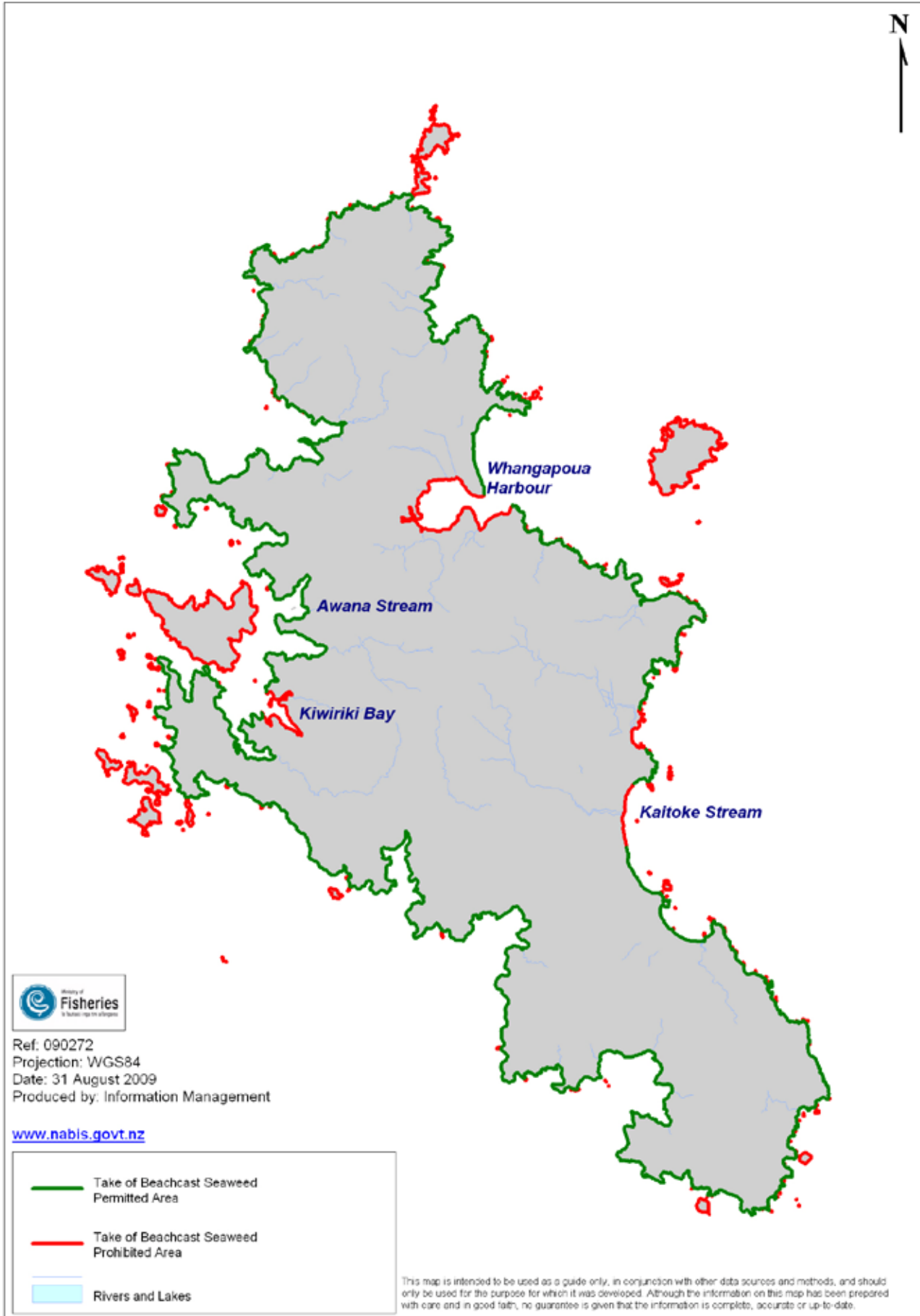
Commercial Beachcast Seaweed Harvesting Areas – FMA 1
from October 26 2009



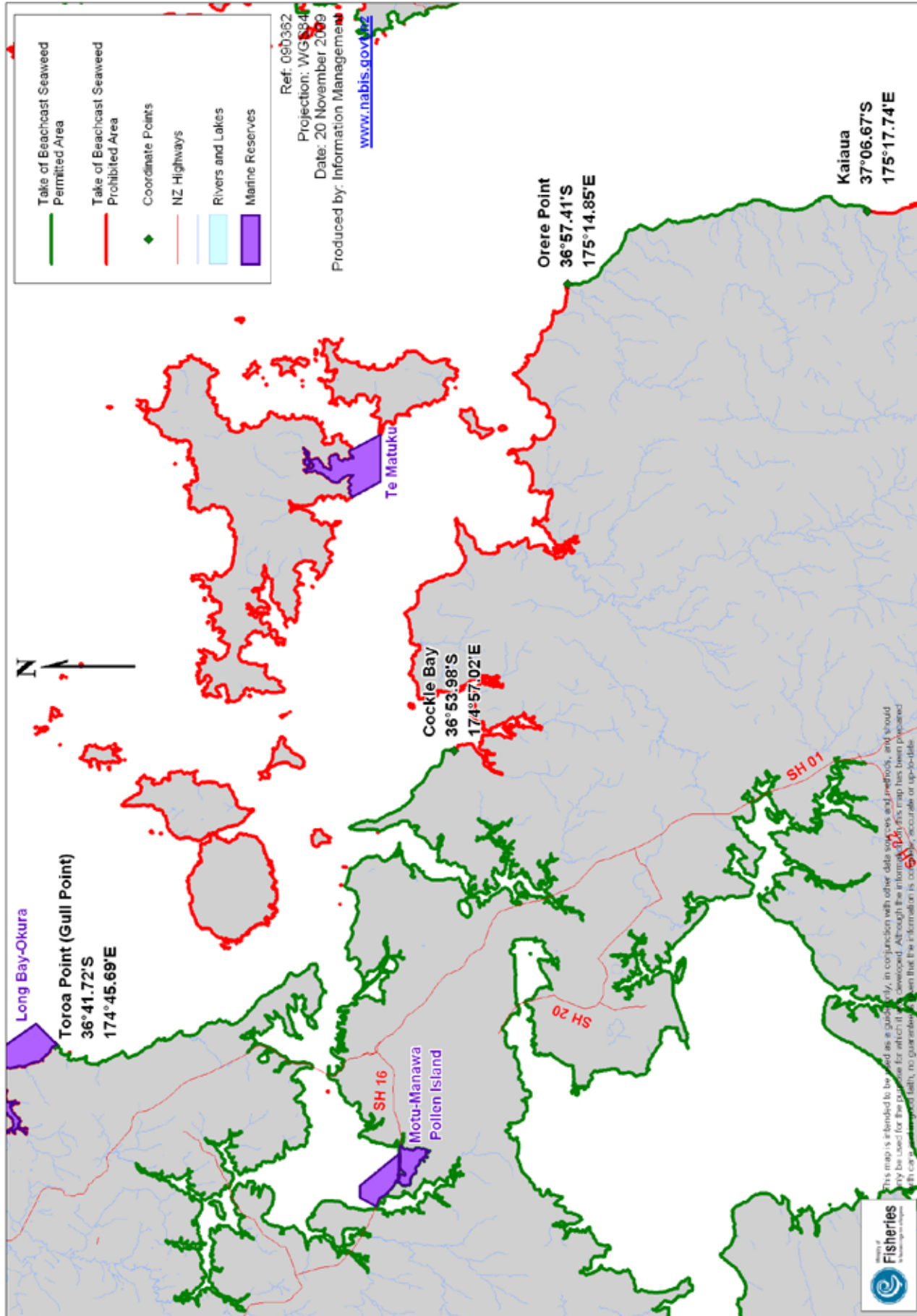
Commercial Beachcast Seaweed Harvesting Areas – FMA 1
from October 26 2009



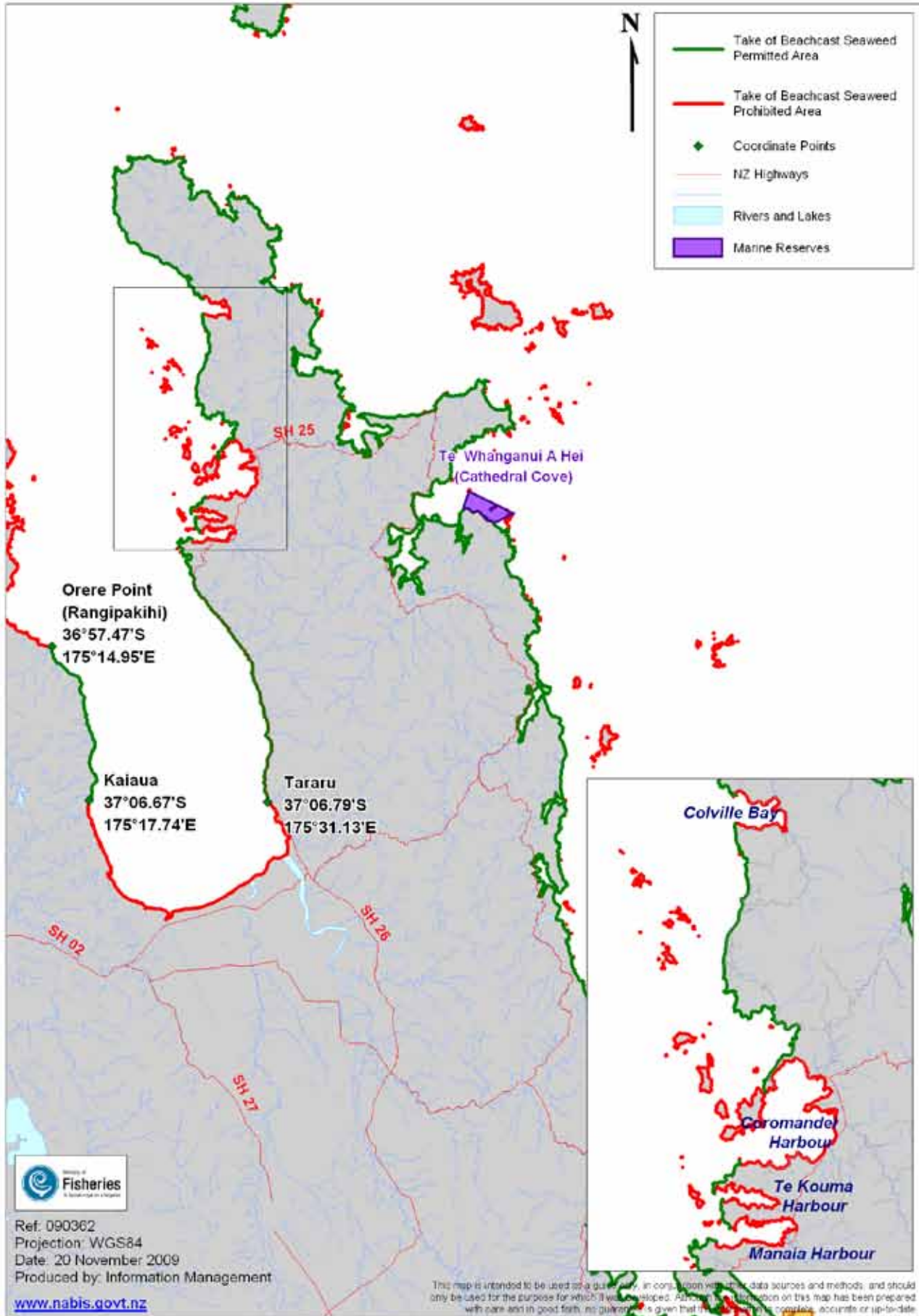
Commercial Beachcast Seaweed Harvesting Areas – FMA 1
from October 26 2009



Commercial Beachcast Seaweed Harvesting Areas – FMA 1 from October 26 2009



Commercial Beachcast Seaweed Harvesting Areas – FMA 1
from October 26 2009



Commercial Beachcast Seaweed Harvesting Areas – FMA 1 from October 26 2009

